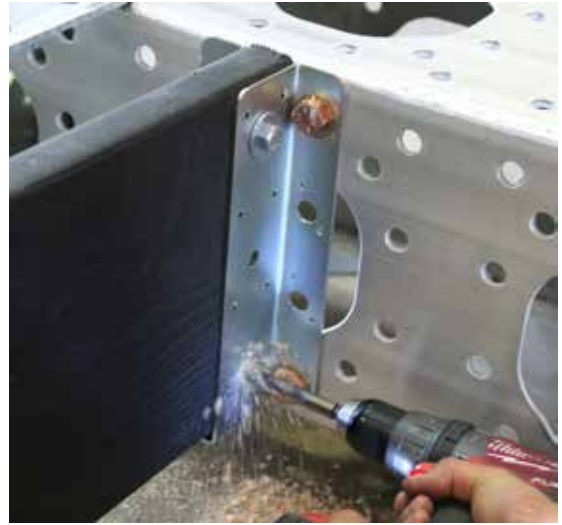
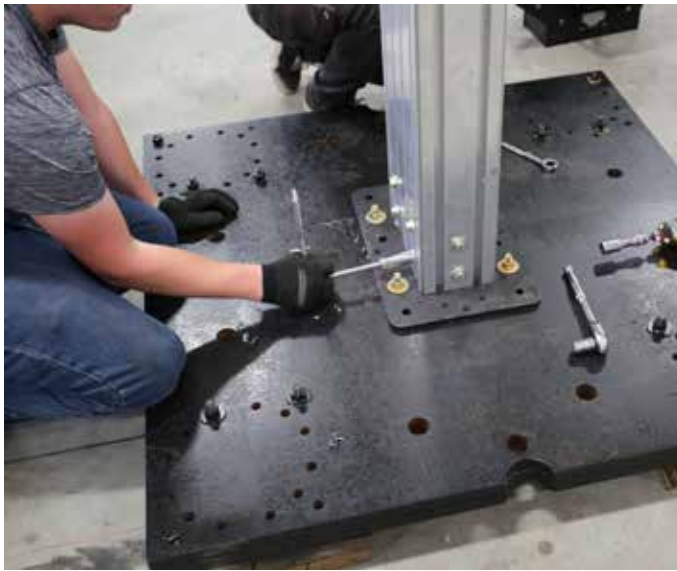


TK | TOOLS



TOOLS



TK



ModTruss Tool Kit - 1 (SAE - Standard)

Part Number | MT-TK-01-SAE

Additional tools recommended per product



ModTruss Tool Kit-1 Includes:

1 - ModTruss 12" Work Bag	MT-TK-WB-12-07-08
1 - 15/16" Combination Wrench (Halved)	MT-TK-CW-10-0-SAE
1 - 15/16" Spud Wrench	MT-TK-SW-10-0-SAE
1 - 1-1/6" Broad-Head Bull Pin	MT-TK-BP-00-0-UNI
1 - 1/2" Drive Quick Release Oval Head Ratchet	MT-TK-RT-00-2-UNI
1 - 1/2" Drive Extension	MT-TK-EX-00-2-UNI
1 - 15/16" Standard Socket, 12-Point (1/2" Drive)	MT-TK-SS-10-2-SAE
1 - 15/16" Deep Socket, 12-Point (1/2" Drive)	MT-TK-DS-10-2-SAE
1 - 1/2" Drive Universal Joint	MT-TK-UJ-00-2-UNI



Electrical Hazard



Flammability



In Stock



Made To Order



Customizable



Reusable



Compatible



Serialized & Traceable

TR

EX

PL

JH

PA

HG

MR

AC

HW

TK

MH

FH

GL

Series | TK Tools

**ModTruss 12" Work Bag****MT-TK-WB-12-07-08**

Material: Durable fabric and heavy duty webbing handles with leather reinforcements

Color: Brown Duck

Size: 12" x 7" x 8"

**15/16" Combination Wrench (Halved)****MT-TK-CW-10-0-SAE**

Material: Heat treated chrome vanadium steel

Finish: Chrome plated mirror polish

Size: 15/16" (2.5" x 15" x 1")

**15/16" Spud Wrench****MT-TK-SW-10-0-SAE**

Material: Heat treated steel

Finish: Black-Oxide

Size: Bolt Size: 5/8"

Top Diameter: 2-1/4"

Point Diameter: 7/8" to 3/16"

Length: 14-3/4"

**1-1/16" Broad-Head Bull Pin****MT-TK-BP-00-0-UNI**

Material: Heat treated steel

Finish: Black-Oxide

Size: Top Diameter: 1-1/16"

Point Diameter: 1/4"

Length: 10"



Electrical Hazard



Flammability



In Stock



Made To Order



Customizable



Reusable



Compatible



Serialized & Traceable



1/2" Drive Quick Release Oval Head Ratchet

MT-TK-RT-00-2-UNI

Material: Heat treated chrome vanadium steel

Finish: Chrome plated mirror polish

Size: Handle 7.5" Long (2.3" x 11.5" x 1.5")



1/2" Drive Extension

MT-TK-EX-00-2-UNI

Material: Heat treated chrome vanadium steel

Finish: Chrome plated

Size: 10" Long (1.75" x 12.25" x .75")



15/16" Deep Socket, 12-Point (1/2" Drive)

MT-TK-DS-10-2-SAE

Material: Heat treated chrome vanadium steel

Finish: Chrome plated

Size: 15/16" (1.75" x 5.5" x 1.25")



15/16" Standard Socket, 12-Point (1/2" Drive)

MT-TK-SS-10-2-SAE

Material: Heat treated chrome vanadium steel

Finish: Chrome plated

Size: 1/2" (1.75" x 1.5" x 1.25")



Electrical Hazard



Flammability



In Stock



Made To Order



Customizable



Reusable



Compatible



Serialized & Traceable

TR

EX

PL

JH

PA

HG

MR

AC

HW

TK

MH

FH

GL

Series | TK Tools

**3/4" Combination Wrench****MT-TK-CW-07-0-SAE**

Material: Heat treated chrome vanadium steel

Finish: Chrome plated mirror polish

Size: 3/4" (9.5" x 1.5" x .5")

**6 Hex Key Wrench Cluster****MT-TK-HX-00-0-SAE**

Material: Alloy Steel and Plastic Handle

Hex Key Sizes Included:

5/32" | 3/16" | 7/32" | 1/4" | 5/16" | 3/8"

Overall Size: 5.5" x 1.75" x 1.5"

**1/2" Drive Universal Joint****MT-TK-UJ-00-2-UNI**

Material: Chrome vanadium alloy steel

Finish: Nickel-chrome plated

Size: 1/2" (5.25" x 1.75" x 1")



Electrical Hazard



Flammability



In Stock



Made To Order



Customizable



Reusable



Compatible



Serialized & Traceable