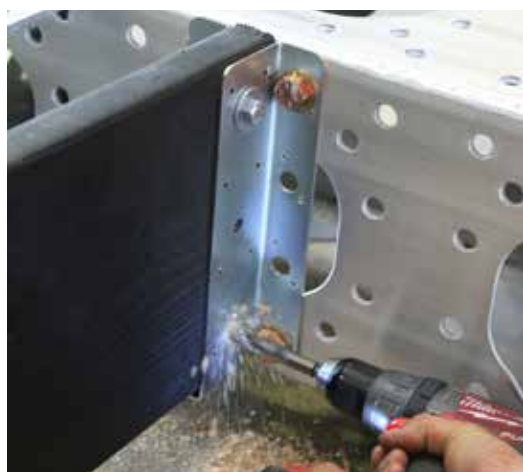
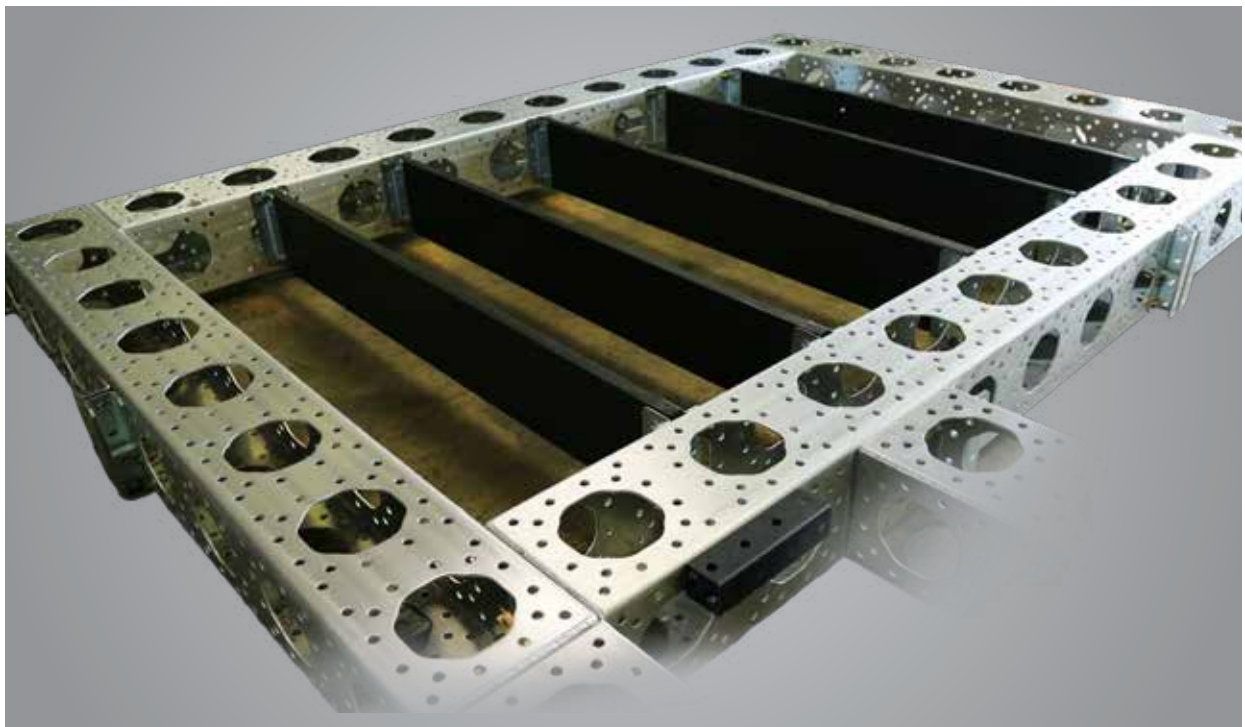
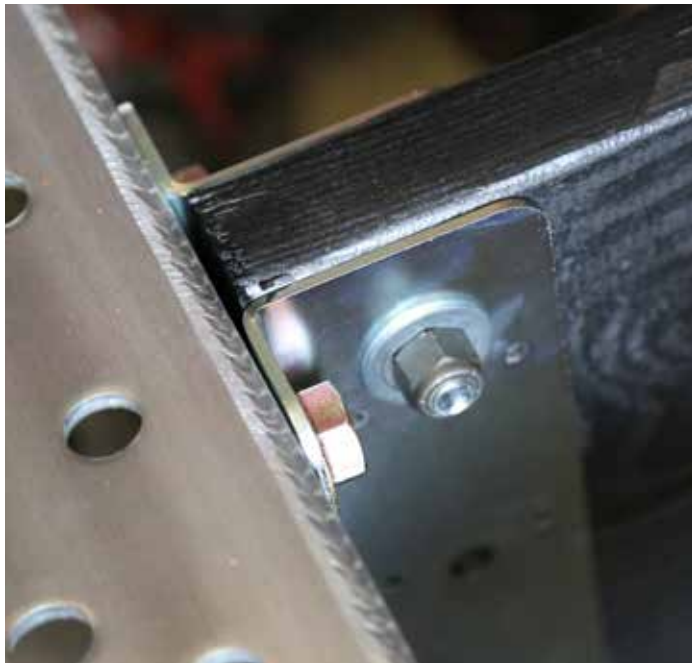
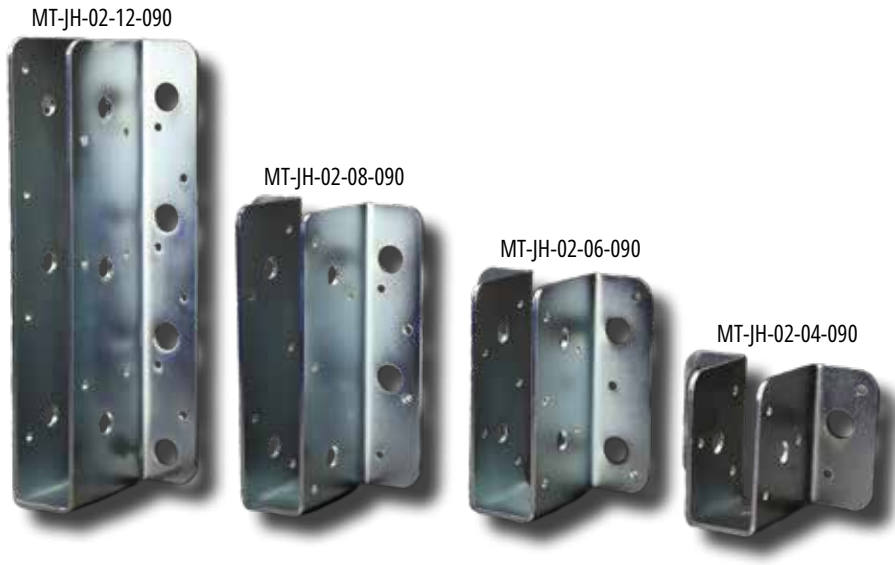


JH | JOIST HANGERS





Joist Hangers



Standard Material	A36 Low Carbon Steel
Standard Finish	10 - Zinc Clear
Available Finish(es)	10-12, 20-33
Hole Size	11/16" (17.46mm) 1/2" Bolt Hole (12.7mm) .20" Screw Hole (5.08mm)
Recommended Hardware	5/8"-11 Thread Grade 8 Bolt, 2" Long 5/8" SAE Zinc-Plated Washer 5/8"-11 Thread, Grade 8 Hex Nut #10 Wood Screw, 1.25" Long 1/2"-13 Grade 5 Hex Bolt, 3" Long 1/2" SAE Zinc-Plated Washer 1/2"-13 Thread, Grade 5 Hex Nut (M16 x 2 Thread, 50mm Long, Class 10.9 Bolt M16, Class 10.9 Washer M16 x 2 Thread, Class 10.9 Nut)
Recommended Tools	Tool Kit 1 1/2" Drill Bit 3/4" Combination Wrench 3/4" Deep Well Socket, 1/2" Drive
For More Info	www.ModTruss.com

Part # Description	Size	Weight	
MT-JH-02-12-090 2" x 12" x 90°	4.75" x 3.13" x 11.38" (120.07mm x 79.50mm x 289.05mm)	3.40lbs (1.54kg)	Joist Hanger Fits Nominal 2" x 12" Lumber (Actual size 1.5" x 11.25" - 38mm x 286mm) as defined by the ALSC
MT-JH-02-08-090 2" x 8" x 90°	4.75" x 3.13" x 7.38" (120.07mm x 79.50mm x 187.45mm)	2.30lbs (1.04kg)	Joist Hanger Fits Nominal 2" x 8" Lumber (Actual size 1.5" x 7.25" - 38mm x 184mm) as defined by the ALSC
MT-JH-02-06-090 2" x 6" x 90°	4.75" x 3.13" x 5.63" (120.07mm x 79.50mm x 143.00mm)	1.70lbs (0.77kg)	Joist Hanger Fits Nominal 2" x 6" Lumber (Actual size 1.5" x 5.5" - 38mm x 140mm) as defined by the ALSC
MT-JH-02-04-090 2" x 4" x 90°	4.75" x 3.13" x 3.63" (120.07mm x 79.50mm x 92.20mm)	1.10lbs (0.50kg)	Joist Hanger Fits Nominal 2" x 4" Lumber (Actual size 1.5" x 3.5" - 38mm x 89mm) as defined by the ALSC



Electrical Hazard



Flammability



In Stock



Made To Order



Customizable



Reusable



Compatible



Serialized & Traceable

TR

EX

PL

JH

PA

HG

MR

AC

HW

TK

MH

FH

GL

Series | JH Joist Hangers

Product Number | MT-JH-02-XX-090



<p>MT-JH-02-12-090 MT-JH-02-08-090 MT-JH-02-06-090 MT-JH-02-04-090</p>			
<p>PRECISION LEVEL - MED - ±0.04 (1.59) BRACKET (1) DIMENSIONS ARE IN MM</p>			
<p>8/13/2018 REVISION: V1</p>		<p>DISCRIPTION: JOIST HANGERS</p>	
<p>PART NUMBER: MT-JH-02-XX-090</p>		<p>PART NUMBER: MT-JH-02-XX-090</p>	