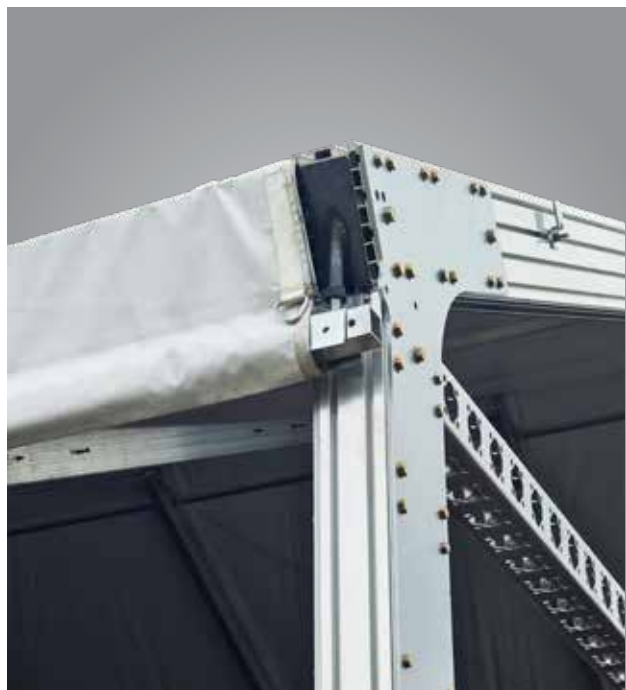


EX | 6" x 6" EXTRUSION SERIES



EX

ModTruss Extrusion 6" x 6"

Part Number | MT-EX-06-06-XXX-AL*

*Units in inches



Standard Material	6063-T6 Aluminum
Standard Finish	02 - No Finish
Available Finish(es)	50-51
Size	6" x 6" x User defined length (152.40mm x 152.40mm x User defined length) Max length per piece: 20'
Weight	10.11lbs (4.59kg)* *Weight per foot and Not Certified
Hole Size	T-Slot: 0.656" x 1.312" (16.67mm x 33.34mm) Keyway (aka Keder Track or Screw-boss): 10.5mm
Recommended Hardware	ModTruss Nut Bars ModTruss Insert Nuts 3" Blind Connector - MT-HW-BC-03-03-AS
Recommended Tools	Tool Kit 1 6 Hex Key Wrench Cluster - MT-TK-HX-00-0-SAE
For More Info	www.ModTruss.com



Electrical Hazard



Flammability



In Stock



Made To Order



Customizable



Reusable



Compatible



Serialized & Traceable

TR

EX

PL

JH

PA

HG

MR

AC

HW

TK

MH

FH

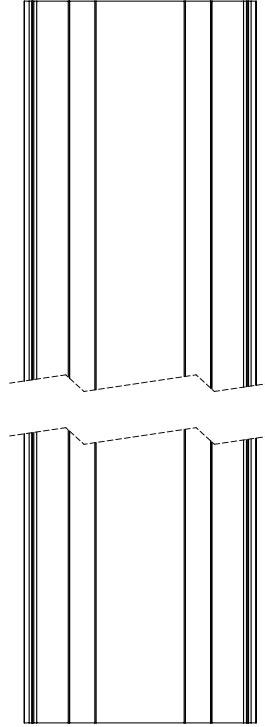
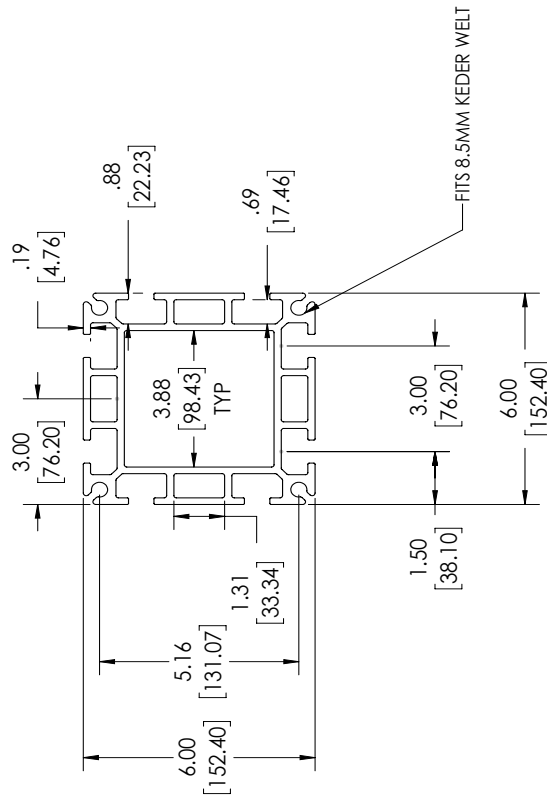
GL

Series | **EX** Extrusion

Product Number | MT-EX-06-06-XXX-AL



LENGHT	PART NUMBER
12"	MT-EX-06-06-012-AL
24"	MT-EX-06-06-024-AL
36"	MT-EX-06-06-036-AL
48"	MT-EX-06-06-048-AL
60"	MT-EX-06-06-060-AL
72"	MT-EX-06-06-072-AL
84"	MT-EX-06-06-084-AL
96"	MT-EX-06-06-096-AL
108"	MT-EX-06-06-108-AL
120"	MT-EX-06-06-120-AL



	PRECISION LEVEL: MED - ±.06 (1.5%) BRACKET (1) DIMENSIONS ARE IN MM	REVISION: VI
	9/18/2018	
DESCRIPTION:	6"x6" EXTRUSION	
PART NUMBER:	MT-EX-06-06-XXX-AL	

Extrusion End Cap 6" x 12"

Part Number | MT-EX-EC-06-12-12-12-090



TR

EX

PL

JH

PA

HG

MR

AC

HW

TK

MH

FH

GL

Standard Material	A36 Low Carbon Steel
Standard Finish	10 - Zinc Clear
Available Finish(es)	10-12, 20-33
Size	12" x 12" x 12.38" (304.80mm x 304.80mm x 314.33mm)
Weight	34.85lbs (15.81kg)
Hole Size	11/16" (17.46mm)
Recommended Hardware	5/8"-11 Thread Grade 8 Bolts 5/8" SAE Zinc-Plated Washer 5/8"-11 Thread, Grade 8 Hex Nut ModTruss Nut Bars
Recommended Tools	Tool Kit 1
For More Info	www.ModTruss.com



Electrical Hazard



Flammability



In Stock



Made To Order



Customizable



Reusable



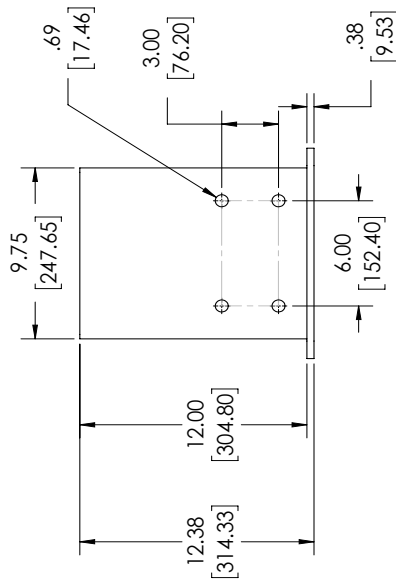
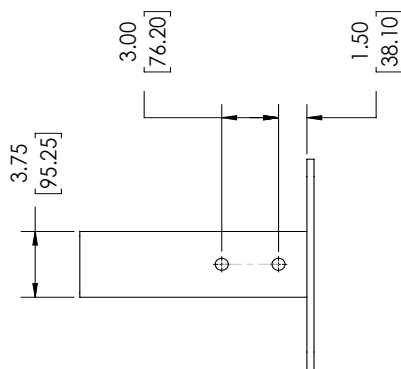
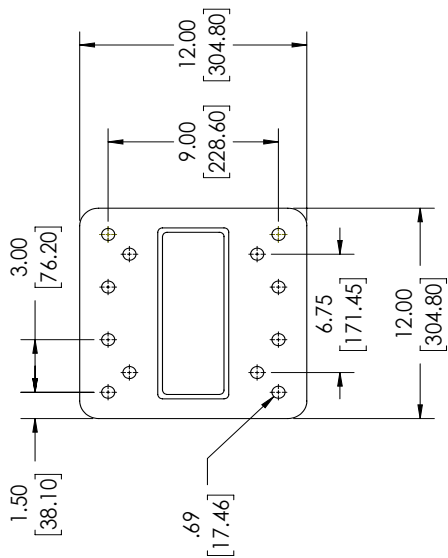
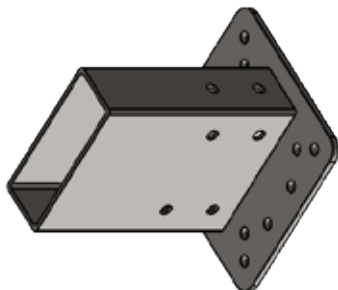
Compatible



Serialized & Traceable

Series | **EX** Extrusion

Product Number | MT-EX-EC-06-12-12-090



	PRECISION LEVEL: MED. $\pm .06$ [1.91] BRACKET {} DIMENSIONS ARE IN MM
	8/13/2018 REVISION: V1
DESCRIPTION: 6" x 12" EXTRUSION END CAP	
PART NUMBER: MT-EX-EC-06-12-12-090	