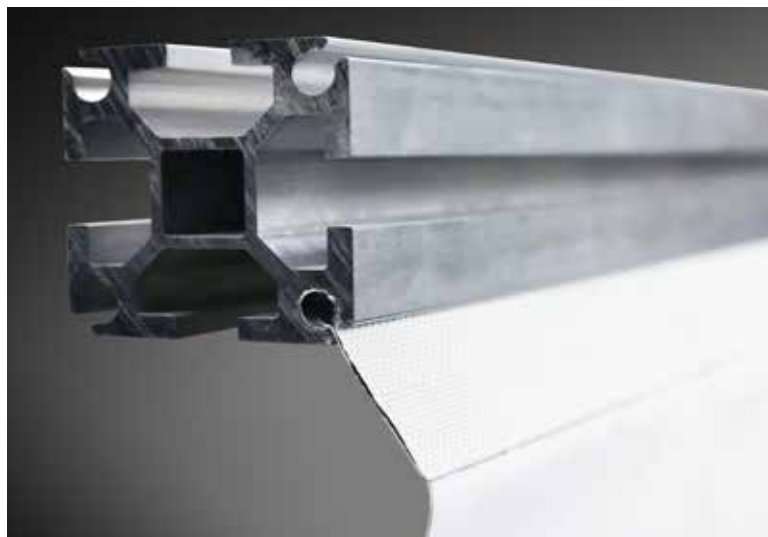
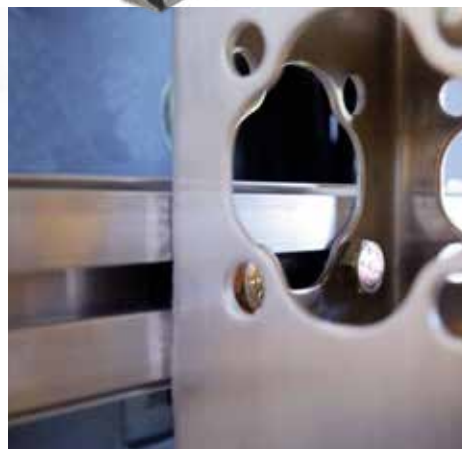


EX | 3" x 3" EXTRUSION SERIES



EX

ModTruss Extrusion 3" x 3"

Part Number | MT-EX-03-03-XXX-AL*
 *Units in inches

TR

EX

PL

JH

PA

HG

MR

AC

HW

TK

MH

FH

GL



Standard Material	6061-T6 Aluminum
Standard Finish	02 - No Finish
Available Finish(es)	50-51
Size	3" x 3" x User defined length (76.20mm x 76.20mm x User defined length) Max length per piece: 40' - No Finish (Finishes may affect maximum available length)
Weight	3.56lbs (1.61kg) *Weight per foot
Hole Size	T-Slot: 0.656" x 1.50" (16.67mm x 38.10mm) Keyway (aka Keder Track or Screw-boss): 10.5mm
Recommended Hardware	ModTruss Nut Bars ModTruss Insert Nuts 3" Blind Connector - MT-HW-BC-03-03-AS
Recommended Tools	Tool Kit 1 12" Miter Saw 6 Hex Key Wrench Cluster - MT-TK-HX-00-0-SAE
For More Info	www.ModTruss.com



Electrical Hazard



Flammability



In Stock



Made To Order



Customizable



Reusable



Compatible



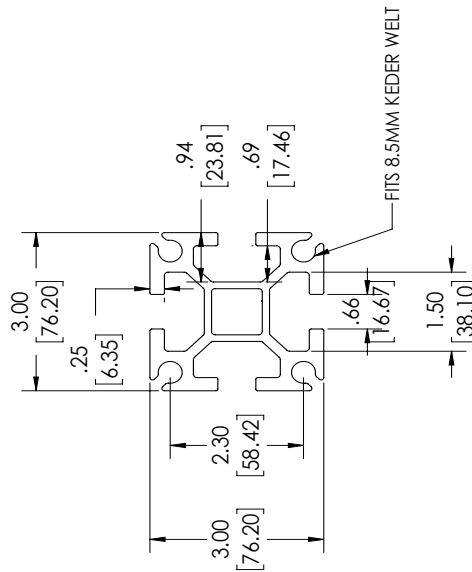
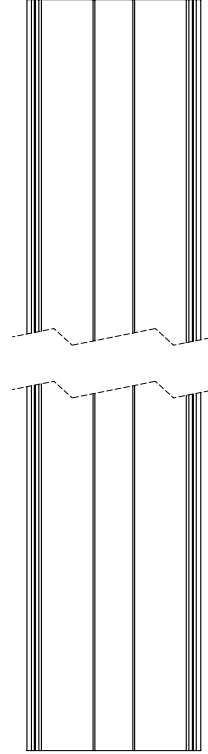
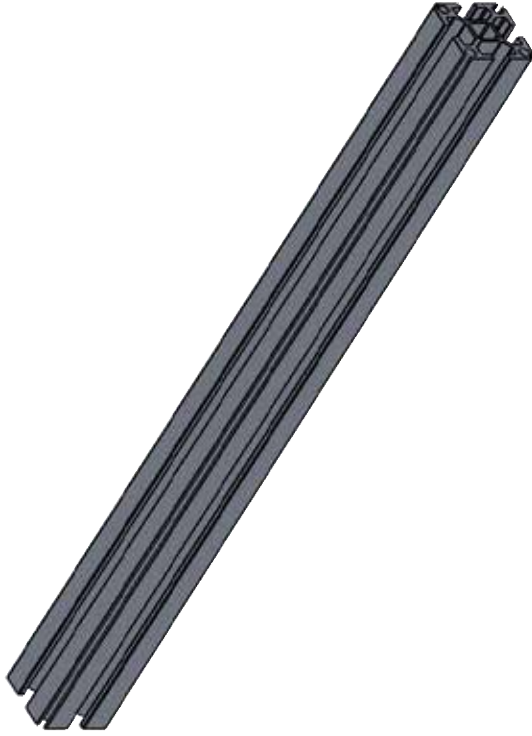
Serialized & Traceable

Series | **EX** Extrusion

Product Number | MT-TR-03-03-XXX-AL



LENGHT	PART NUMBER
12"	MT-EX-03-03-012-AL
24"	MT-EX-03-03-024-AL
36"	MT-EX-03-03-036-AL
48"	MT-EX-03-03-048-AL
60"	MT-EX-03-03-060-AL
72"	MT-EX-03-03-072-AL
84"	MT-EX-03-03-084-AL
96"	MT-EX-03-03-096-AL
108"	MT-EX-03-03-108-AL
120"	MT-EX-03-03-120-AL



	PRECISION LEVEL: MED - ±.03 [1.59] BRACKET () DIMENSIONS ARE IN MM	REVISION: VI
	9/5/2018	
DESCRIPTION: 3"x3" EXTRUSION		
PART NUMBER: MT-EX-03-03-XXX-AL		