



ModTruss<sup>TM</sup> INC  
*Modular Building Components*

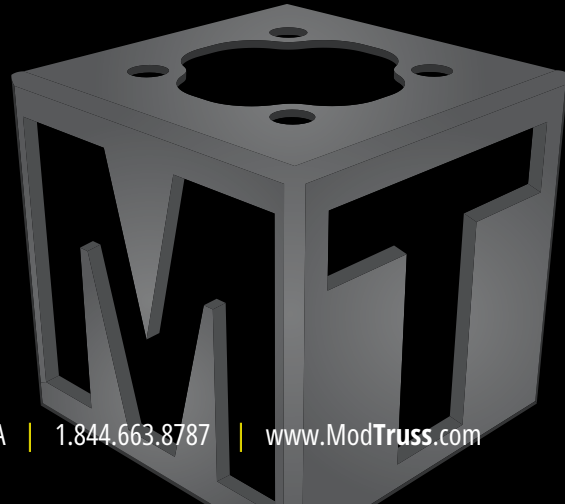


**AEROSPACE**

# ModTruss | Modular Building Components

ModTruss is a tool that makes sense for the modern, nimble MRO. It is the perfect solution for an active aerospace maintenance and repair organization. Our products and accessories allow an MRO to create maintenance stands, tail docks, engine stands and much more. The value to ModTruss is that any structure can be redesigned to work with any size airframe using the same components.

With ModTruss' infinite reconfigurability, it is the last structure you'll ever have to buy.



33 Sheboygan St. | Fond du Lac, WI • 54935 • USA | 1.844.663.8787 | [www.ModTruss.com](http://www.ModTruss.com)



# FROM PALLET TO *PLATFORM*





IN **AEROSPACE**

AND BEYOND

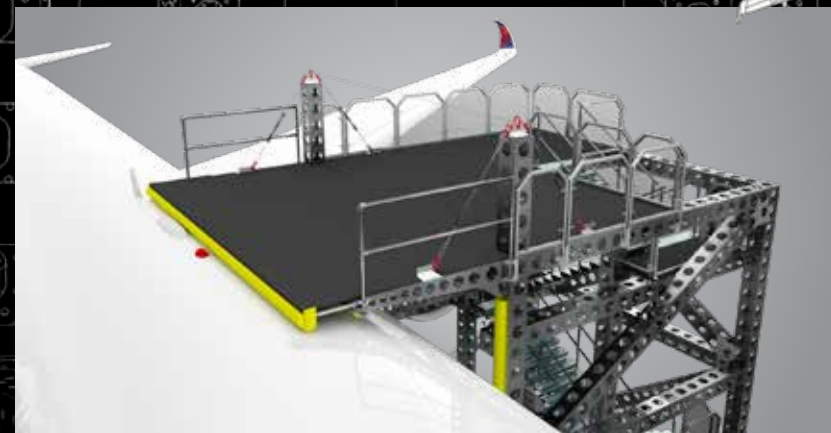
## ANTENNA

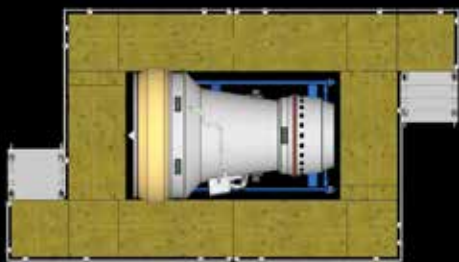
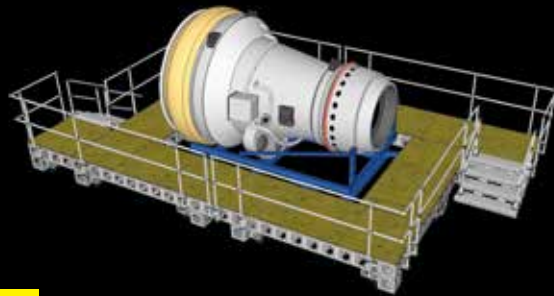
### KEY FEATURES

- Adjustable height work platform
- Wide and secure stairs improve safety and fatigue
- Safety bumpers protect fuselage contact areas
- Easily configurable for multiple aircraft types
- Overhead crane for antenna positioning



ANTENNA GANTRY WITH CRANE **STAND**  
A350 AIRCRAFT SHOWN

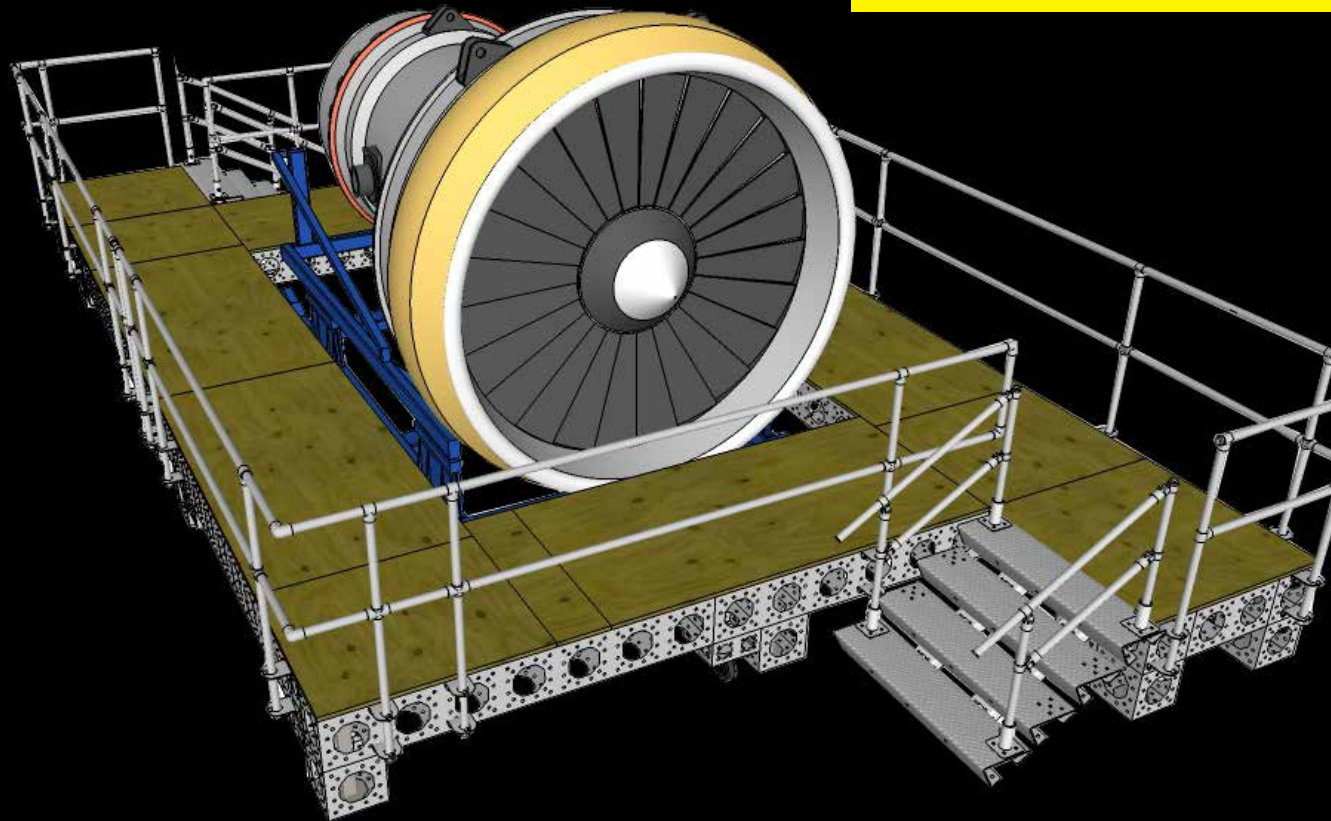




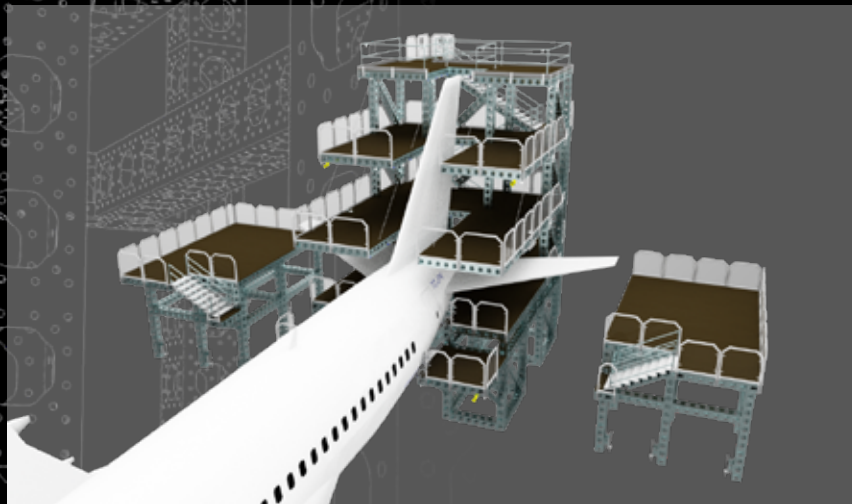
## KEY FEATURES

- Work platform designed for engines secured to shop stands
- Separates into two sections for easy setup
- Reduces need for ladders
- Work-at-height solution
- Increased productivity through easy access
- Reduces employee fatigue and ladder-related injuries
- Reconfigurable for multiple application

ENGINE ACCESS STAND  
CF6-80C2 ENGINE SHOWN



# NARROW BODY TAIL DOCK



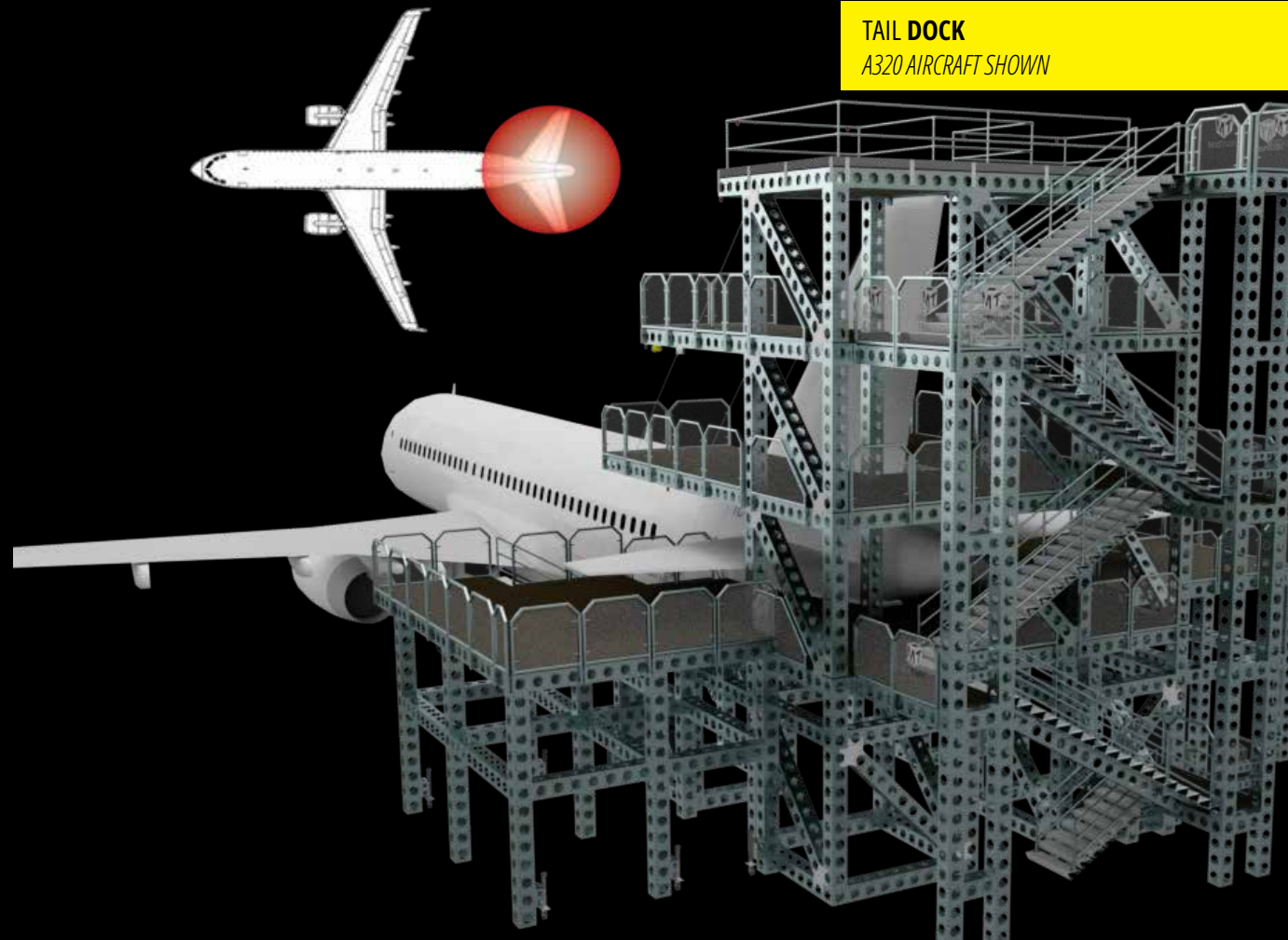
## KEY FEATURES

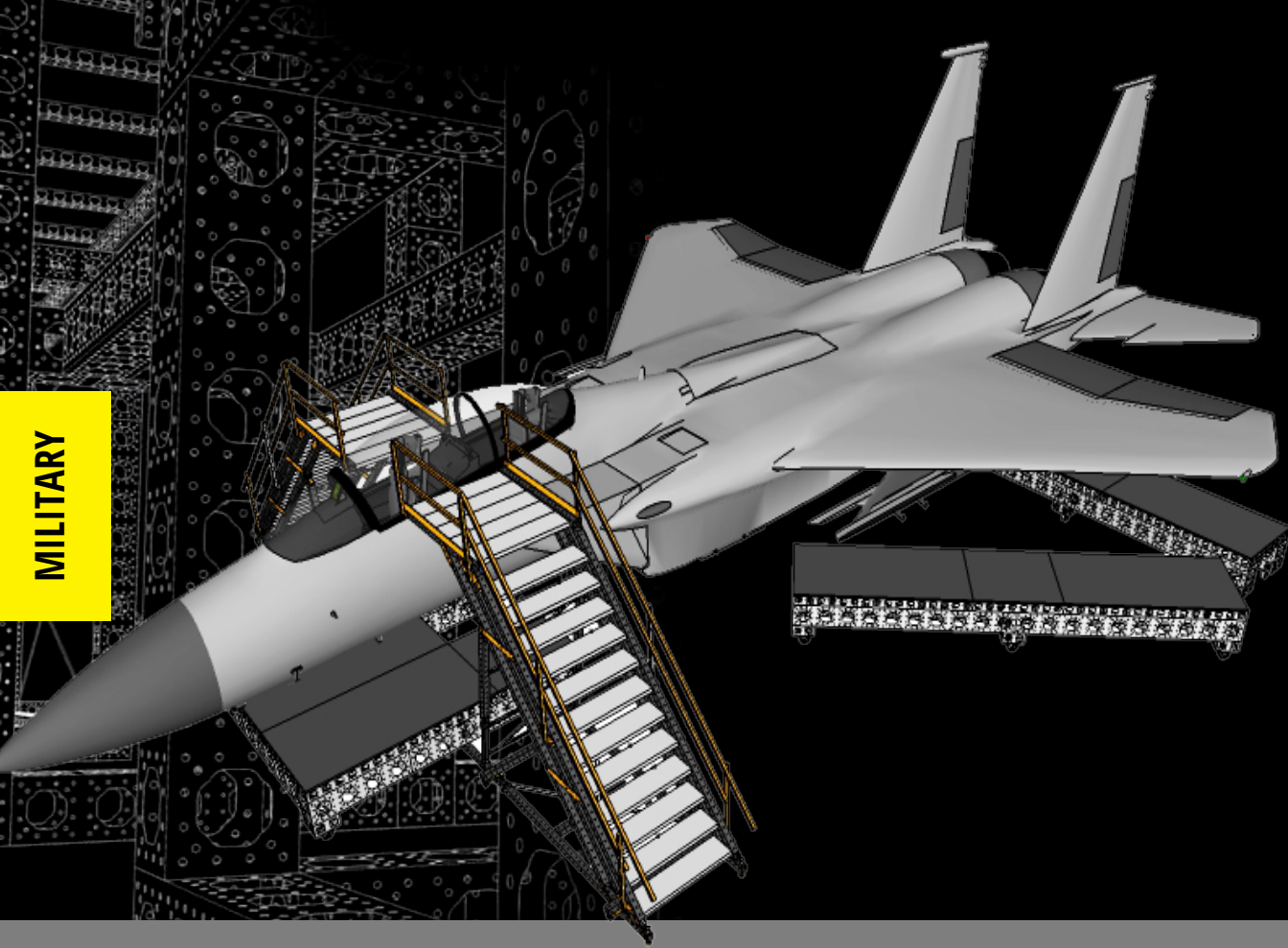
- Multi-level access
- Visual and audible warning systems
- Contour adjusting platforms
- Reconfigurable to future aircraft body style

*ModTruss tail docks ensure your investment will be as timeless as the life of your organization.*

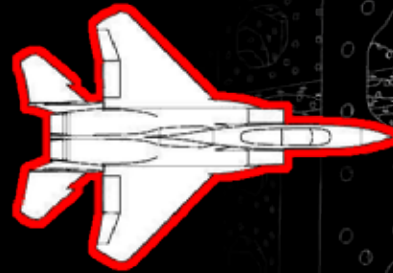
**TAIL DOCK**

A320 AIRCRAFT SHOWN





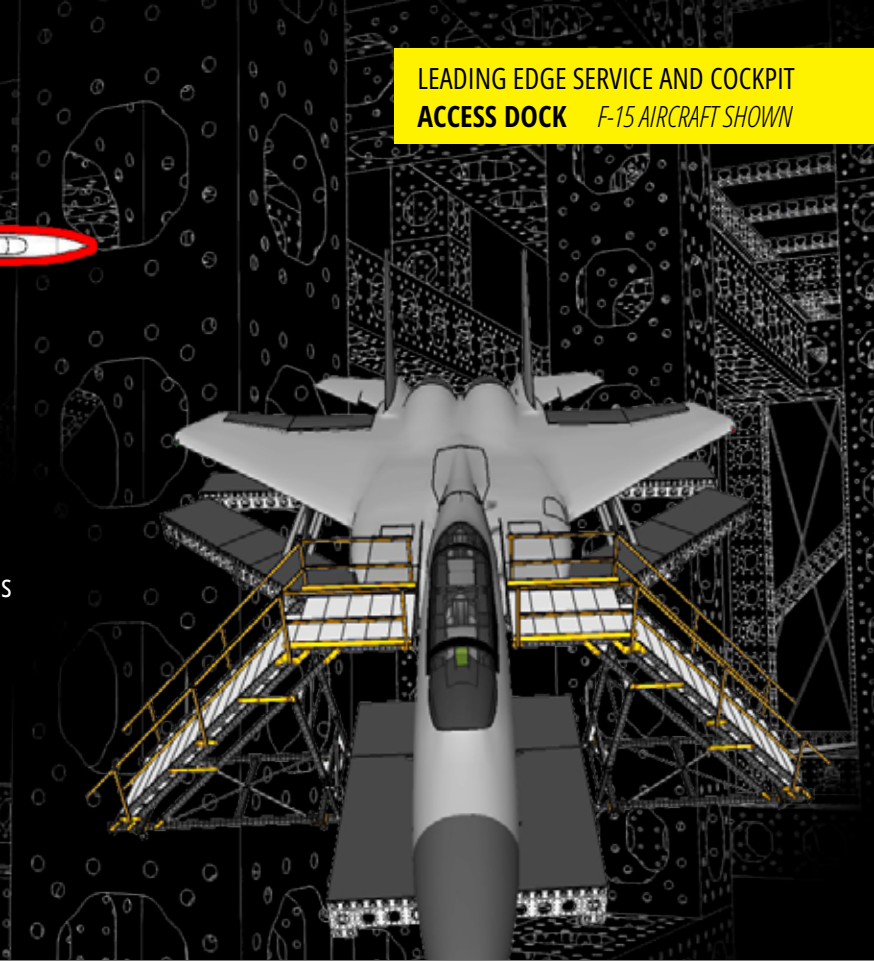
MILITARY



## KEY FEATURES

- Dual adjustable stairs
- Avionic bay access stands
- Leading and trailing edge stands
- Reduces fatigue and increases productivity
- Easily adjustable for multiple aircraft

LEADING EDGE SERVICE AND COCKPIT  
ACCESS DOCK F-15 AIRCRAFT SHOWN





## MILITARY ACCESS STAND

### KEY FEATURES

- Provides easy work-at-height access to all upper areas of aircraft
- Reduces technician fatigue
- Resolves many fall protection issues
- Comprised of several sub-platforms
- Wheels and levelers for ease of maneuverability
- Quick detach guardrails
- Edge protection on aircraft proximal areas
- Reconfigurable to accommodate wing-on or wing-off positions



REGIONAL



REGIONAL FORWARD DOOR ACCESS STAND

FORWARD DOOR ACCESS STAND  
E175 AIRCRAFT SHOWN

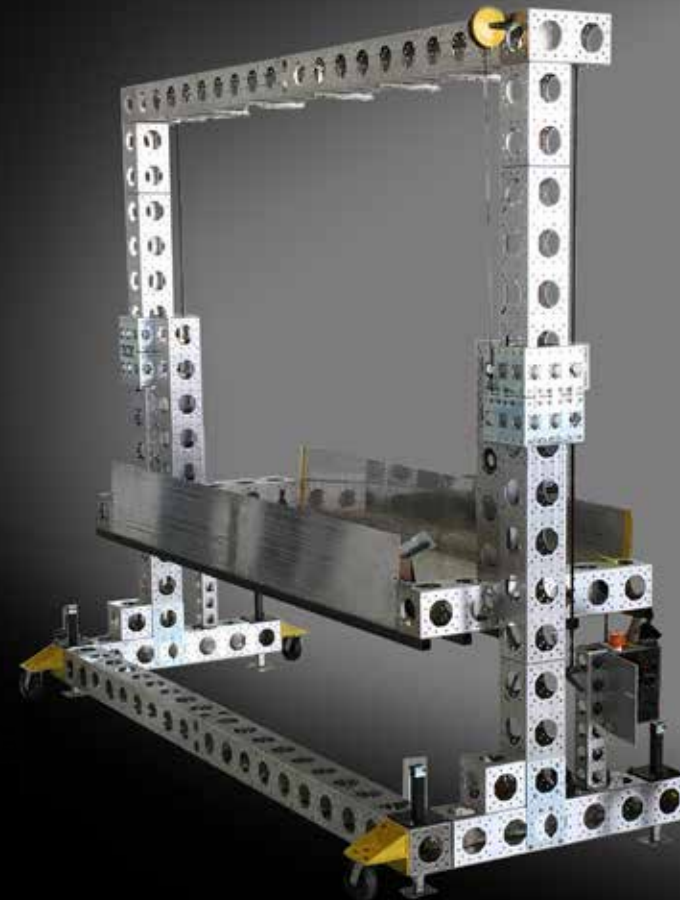


### KEY FEATURES

- **Recovered Space:** Unobstructed space below recovers square footage to be further utilized
- The extra wide code-complaint stairs increase comfort and reduce fatigue on technicians



## REGIONAL SEAT LIFT



This product is ideal for cabin maintenance.

### SEAT LIFT

*E175 AIRCRAFT CONFIGURATION SHOWN*

### KEY FEATURES

- Reduces forklift use
- Large volume carriage streamlines material handling
- Mates to other ModTruss platforms
- Dual ramps for rolling carts



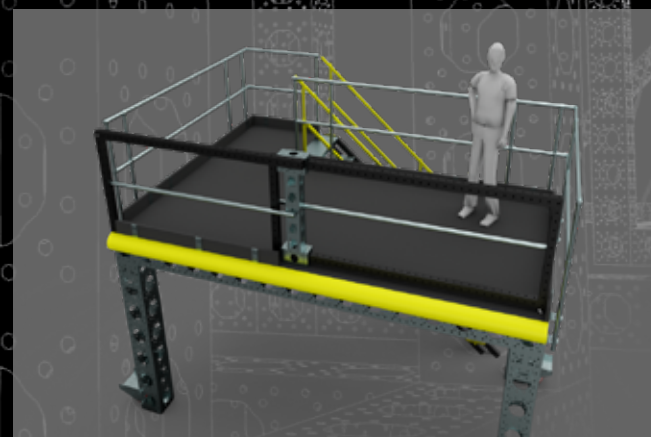
REGIONAL AFT ENTRANCE PLATFORM

AFT ENTRANCE PLATFORM  
E175 AIRCRAFT SHOWN



### KEY FEATURES

- Rear passenger door access platform
- Height adjustable with 12" vertical travel
- Secure locking access gate
- Self adjusting, self-leveling stairs



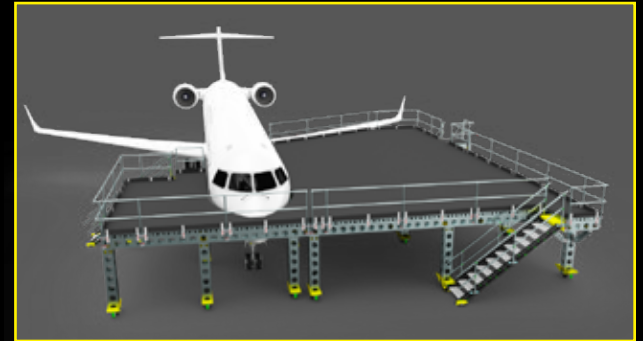
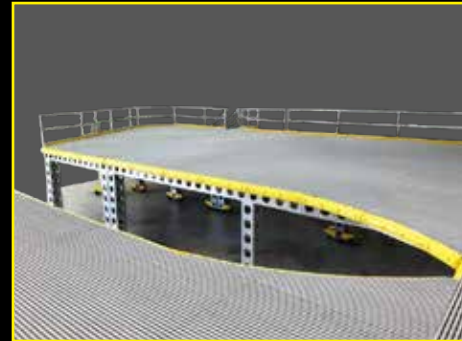
## REGIONAL ACCESS PLATFORM

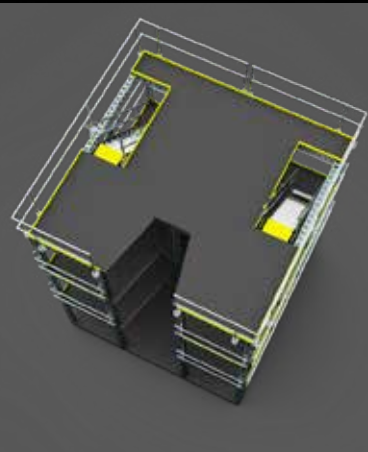
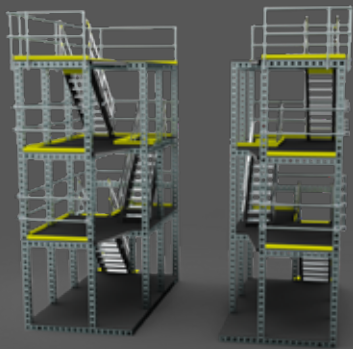
### KEY FEATURES

- Segmented design for easy installation
- Extended platform for at-height material storage
- Extensive recovered space below platform area
- Multiple staircases
- Contoured to airframe



ACCESS PLATFORM  
CRJ700 AIRCRAFT SHOWN





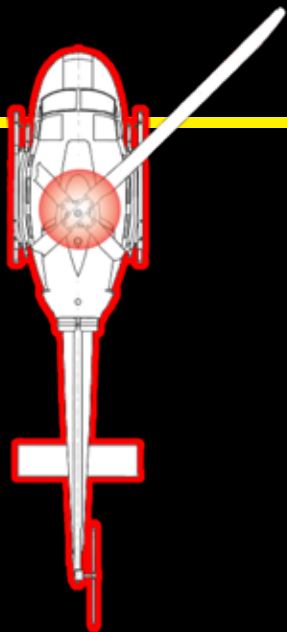
### KEY FEATURES

- Structure separates laterally and encloses the tail structure
- Provides complete access to all areas of the horizontal and vertical stabilizers
- Code compliant stairs, guardrails and toe rails

### TAIL DOCK

*Q400 TURBOPROP CONFIGURATION SHOWN*





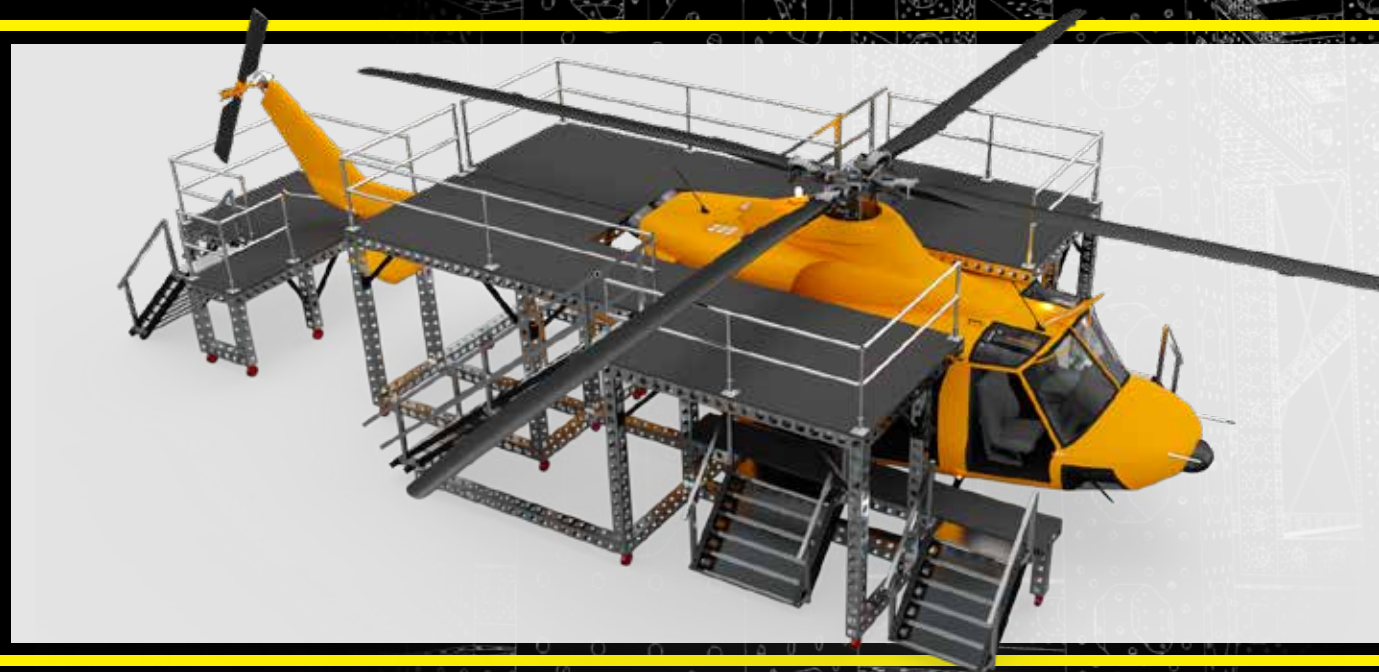
## ROTARY MAINTENANCE DOCK

### KEY FEATURES

- Multi-level airframe access
- Removable guardrails
- Component-based access platform can be used as an assembly or separated into individual sections
- Easy access reduces technician fatigue



MAINTENANCE DOCK  
BELL 412 AIRCRAFT SHOWN

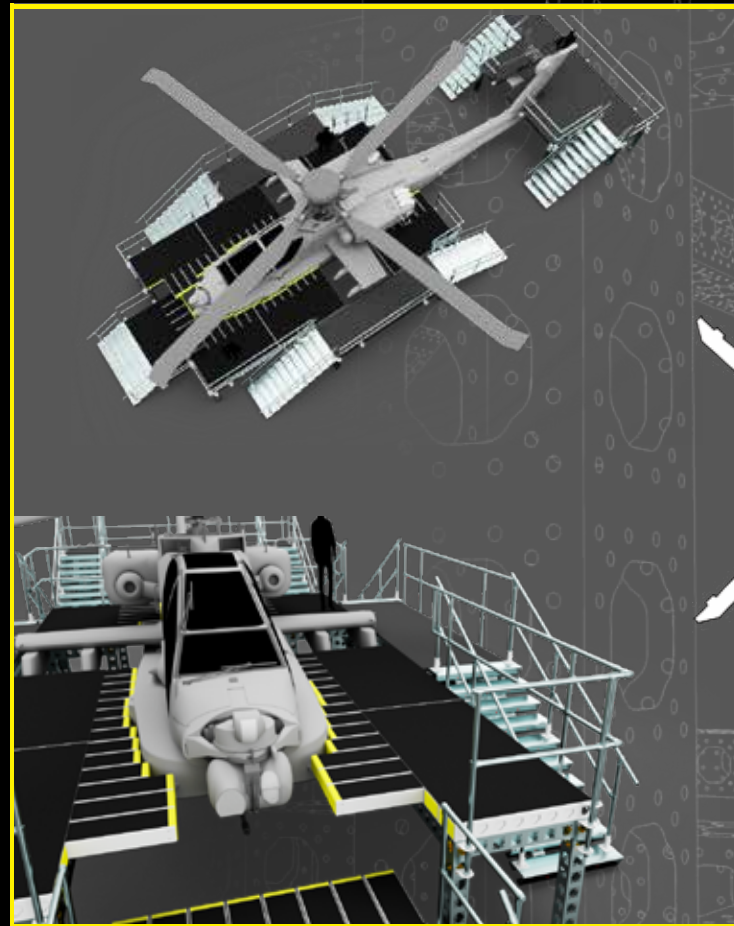


## ROTARY

### ROTARY ACCESS STAND

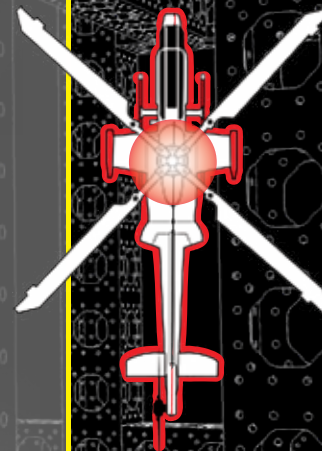
#### KEY FEATURES

- Ships unassembled on compact pallet
- For use in permanent locations or for field deployment
- Contouring platforms adjustable on-site
- Assembles with basic tools



#### ACCESS STAND

AH-64 APACHE AIRCRAFT SHOWN



## STACKABLE SHORING BLOCKS

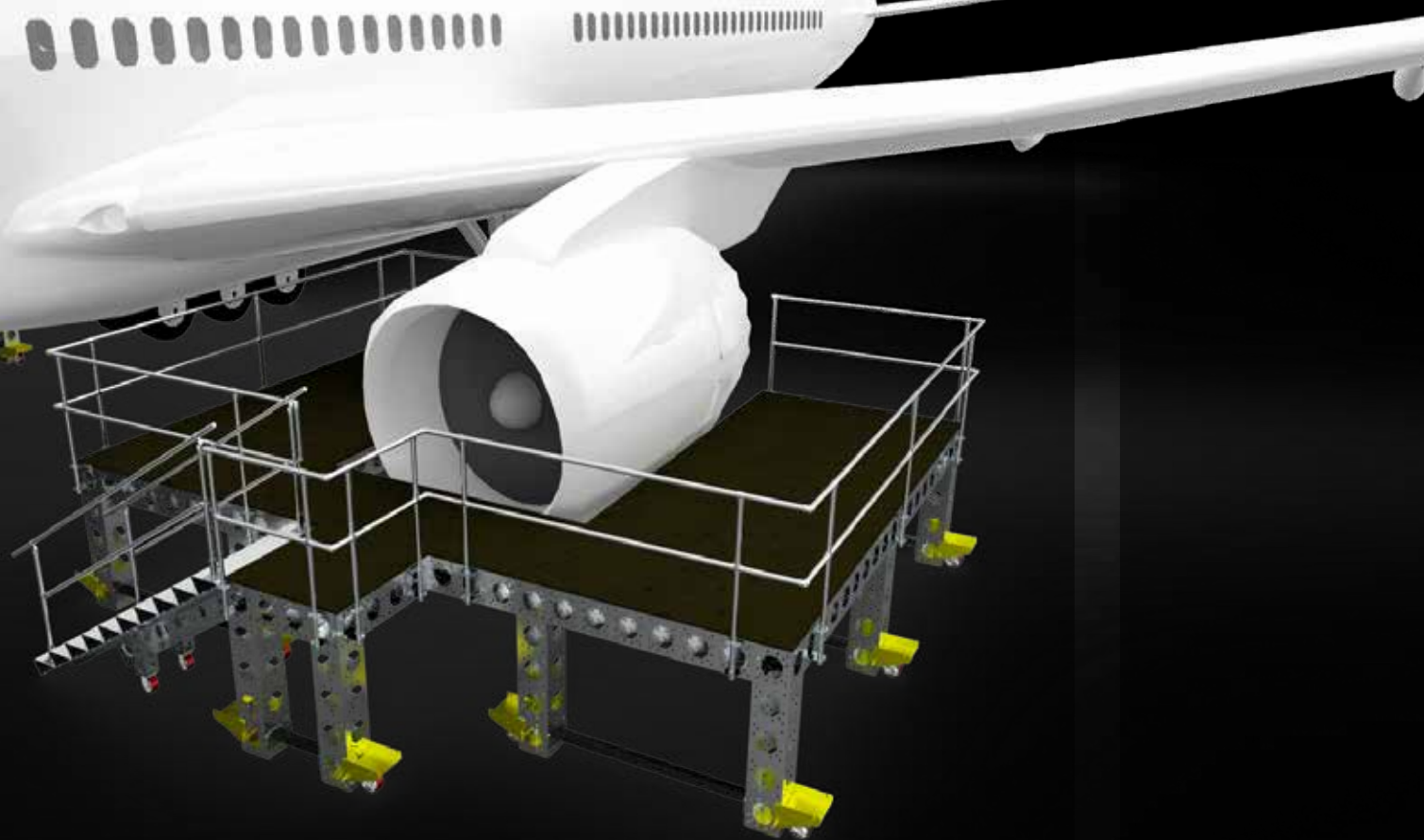
### KEY FEATURES

- A rated safe support structure to hold aircraft during tear-down
- Reconfigurable for multiple airframes
- Easily maneuverable
- Securely suspends the fuselage for stable access
- Improvement over the current industry practice of stacking railroad ties

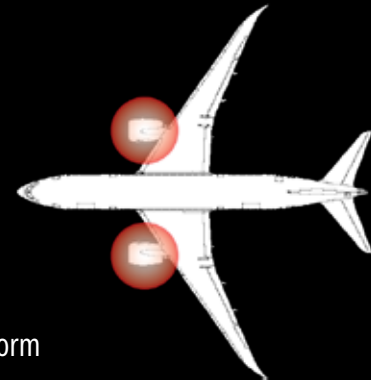


STACKABLE SHORING BLOCKS  
A330 AIRCRAFT SHOWN

WIDE BODY



ON-WING ENGINE MAINTENANCE STAND  
787 AIRCRAFT SHOWN



## KEY FEATURES

- Ergonomic work-at-height platform
- Reduces step-ladder use
- Allows clearance for cowlings to be raised
- Large stairs provides easy access for technicians and components



# WIDE BODY FORWARD DOOR MAINTENANCE STAND

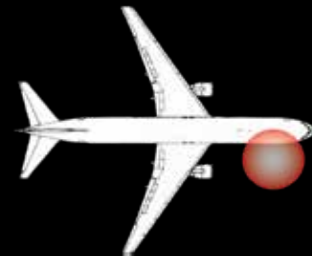
WIDE BODY



**FORWARD DOOR MAINTENANCE STAND**  
767 AIRCRAFT SHOWN

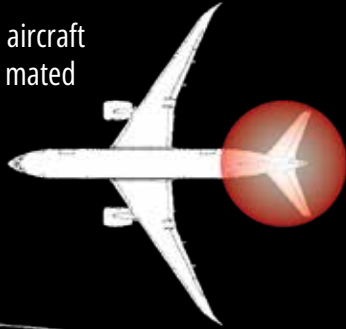
## KEY FEATURES

- Work-at-height staging area
- Code-complaint fixed stairs
- Casters for ease of movement
- Leveling jacks
- Recovered floor space

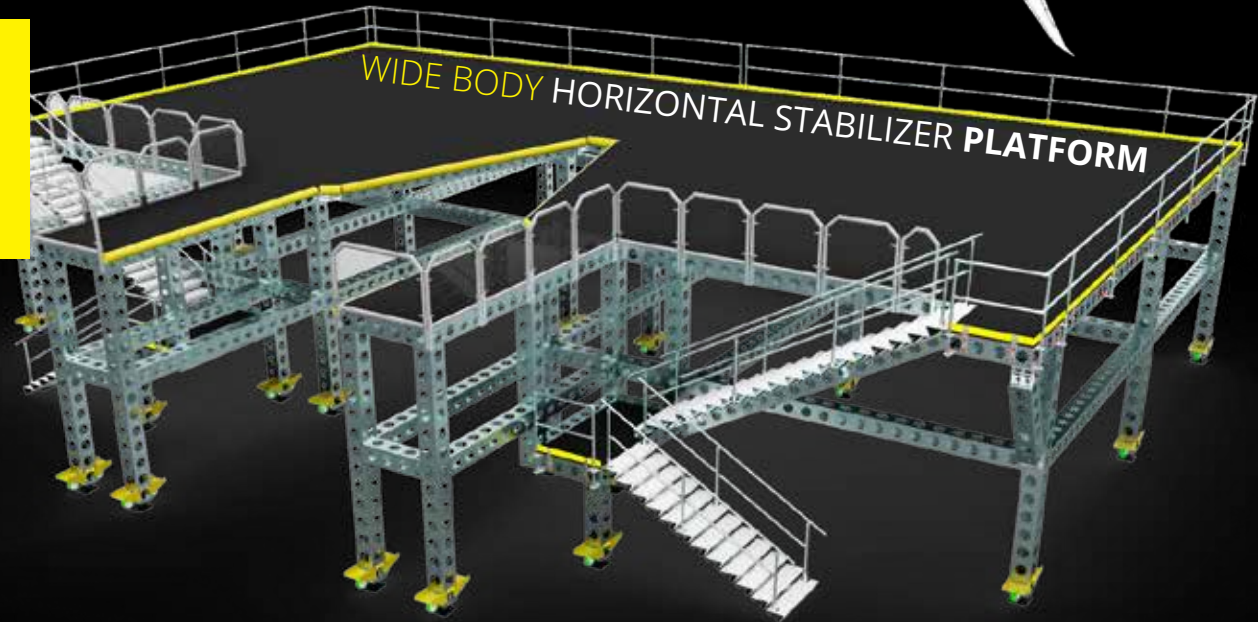


## KEY FEATURES

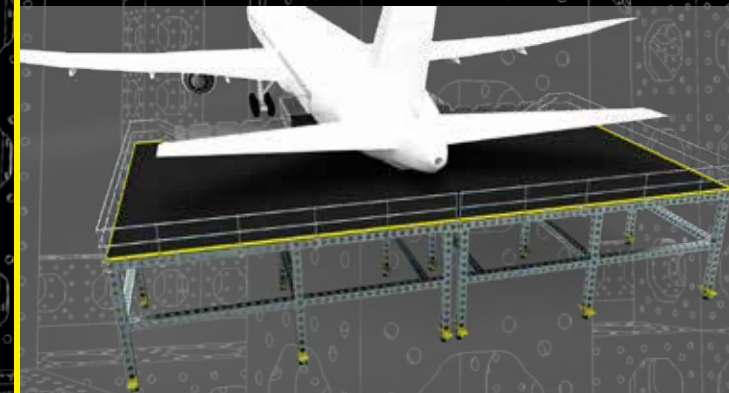
- Sturdy and level clearance beneath entire horizontal platform area
- Stand separates into three sections
- Space below stand is completely usable
- Removable rails allow aircraft and stand to be easily mated
- Two sets of stairs



WIDE BODY



HORIZONTAL STABILIZER **PLATFORM**  
787 AIRCRAFT SHOWN

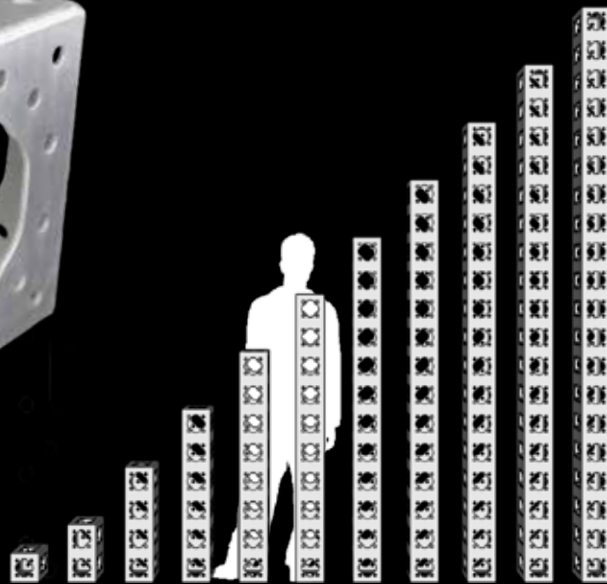




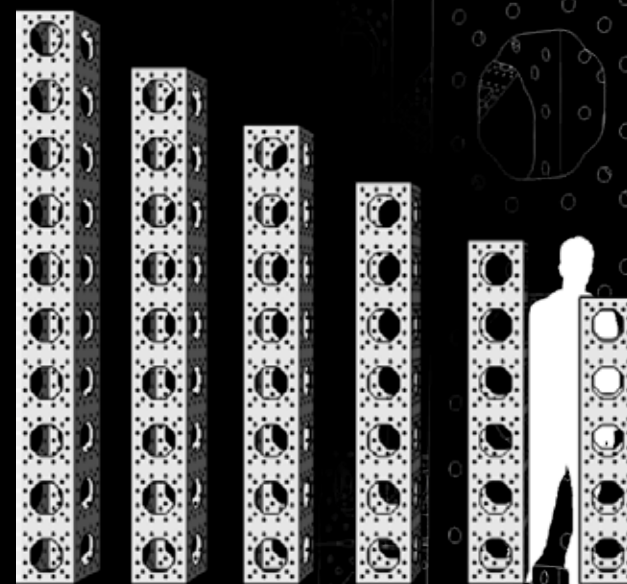
ModTruss<sup>TM</sup> INC



***AEROSPACE***



ModTruss 6" Series



ModTruss 12" Series

The ModTruss TR series has 3 primary profiles: 3" | 6" | 12"  
Available lengths: 3" - 120"

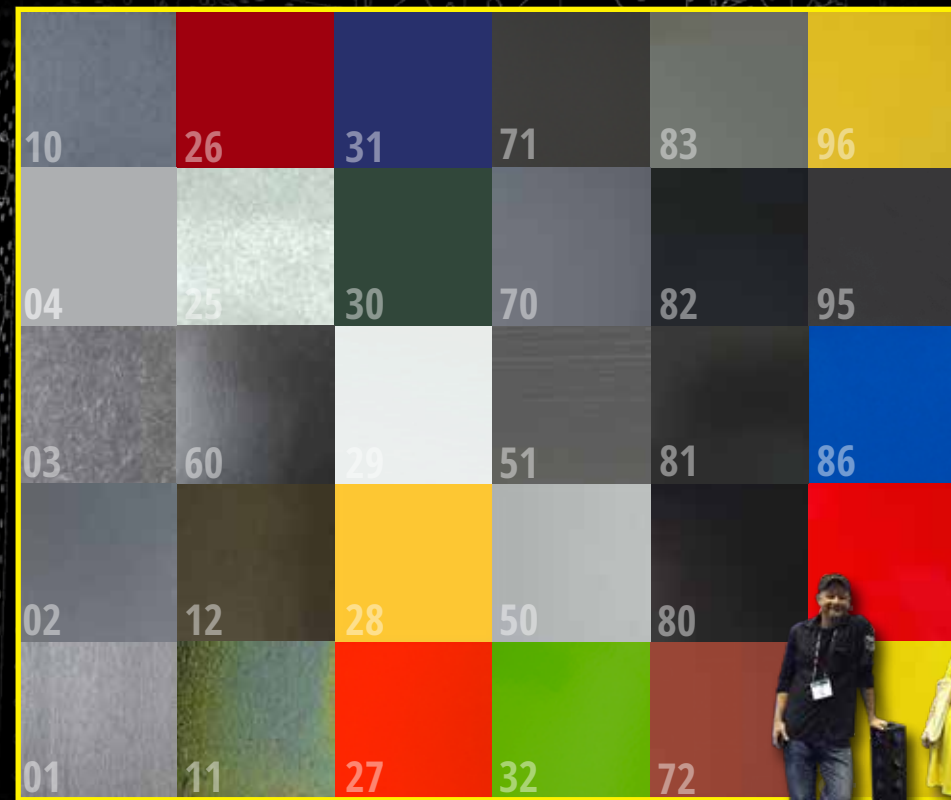
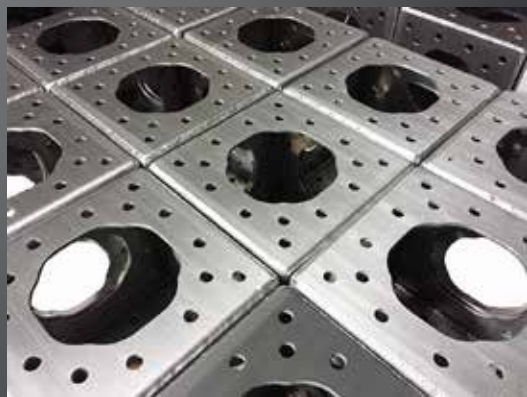


## FINISHES & MATERIALS

### TRADITIONAL FINISHES | Brushed Aluminum & Powder Coated

\*Special coatings are available upon request

### TRUSS MATERIAL | Steel & Aluminum





# LAMINATION



## KEY FEATURES

- Ability to **laminate** itself
- Exponential load ratings & increases span capabilities

## DEFINITION

- *Lamination:* Truss layers are bonded together

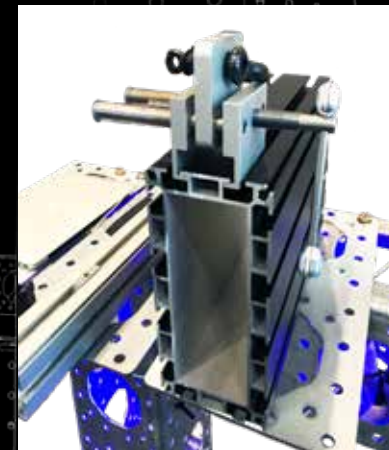
# EXTRUSION



## 6" x 12" EXTRUSION SERIES

### KEY FEATURES

- T-Slot combined within a structural beam
- Keyway (aka Keder Track or Screw-boss)
- Continuous length up to 40'
- 12 available slots
- Compatible with all ModTruss products



# EXTRUSION



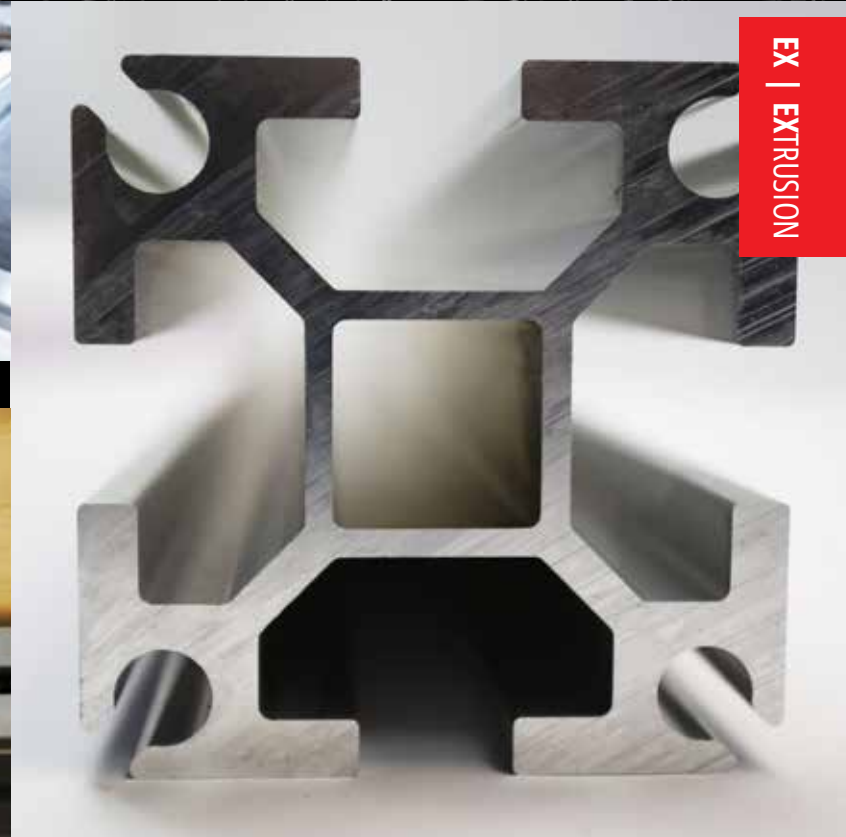
## 3" x 3" EXTRUSION SERIES

### KEY FEATURES

- T-Slot combined within a structural beam
- Keyway (aka Keder Track or Screw-boss)
- Compatible with all Mod**Truss** products
- Continuous length up to 40'
- 4 available slots



Fits 8.5mm keder

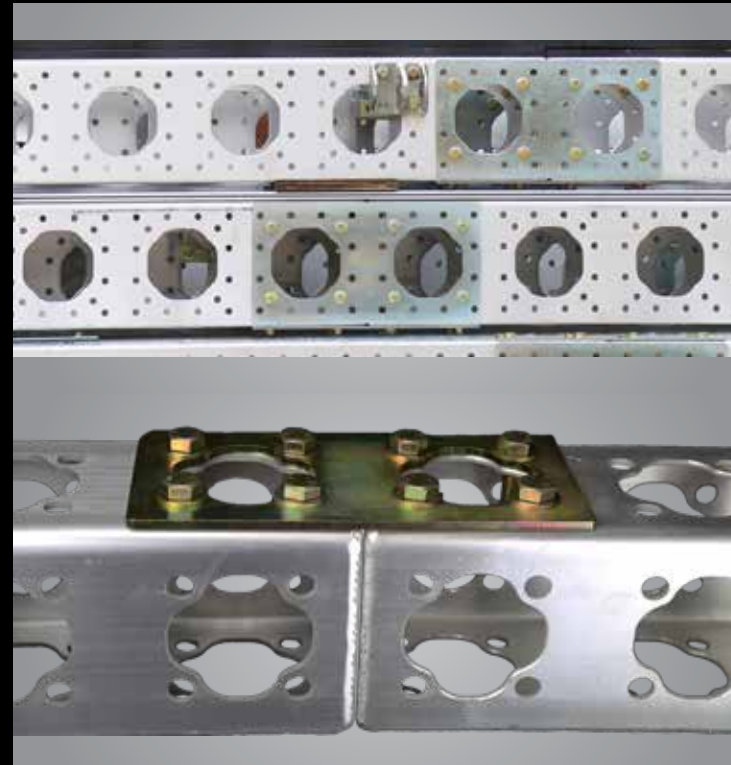


EX | EXTRUSION

## WASHER PLATES



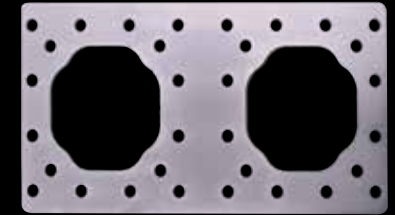
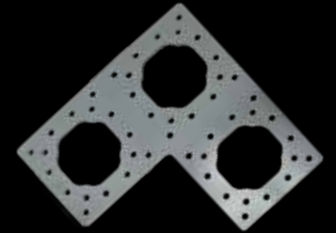
Washer plates allow for localized reinforcement, keeping the self-weight of the structure to a minimum.



**KEY FEATURE** | Reinforces the tension elements of the connection

**COMPATIBILITY** | 3", 6" & 12" TR & EX SERIES

## SPLICE PLATES



PL | PLATES

# JOIST HANGERS



2x12



2x8



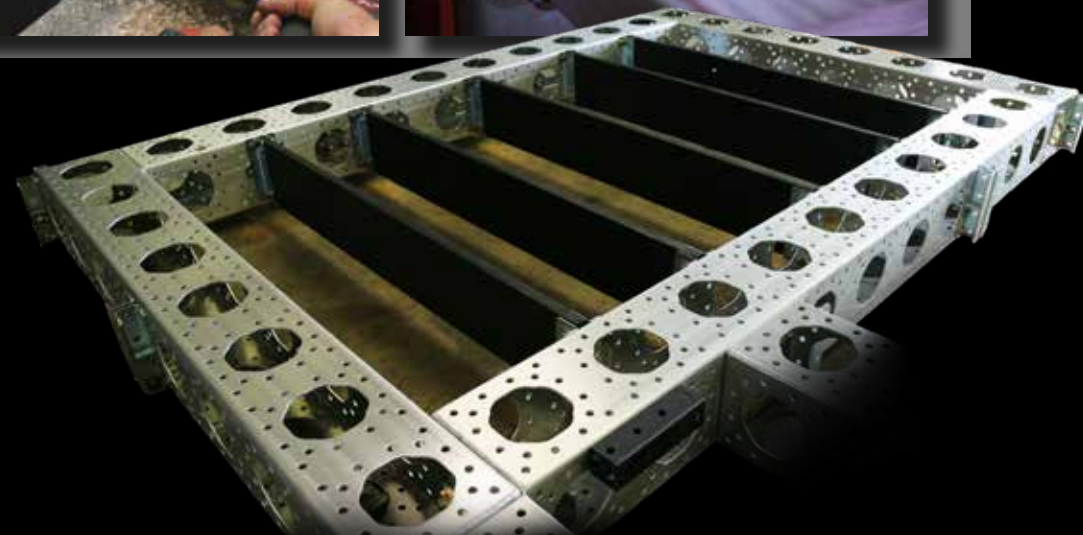
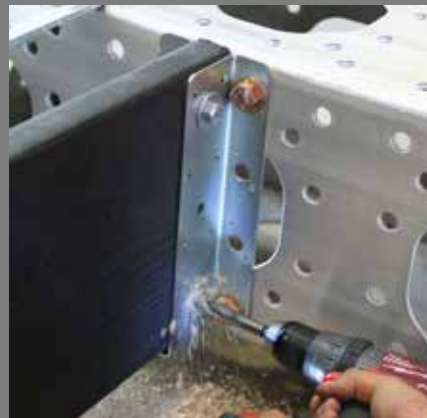
2x6



2x4

**KEY FEATURE** | Integrates traditional lumber to the ModTruss product line

**COMPATIBILITY** | Mates seamlessly with both TR and EX product lines

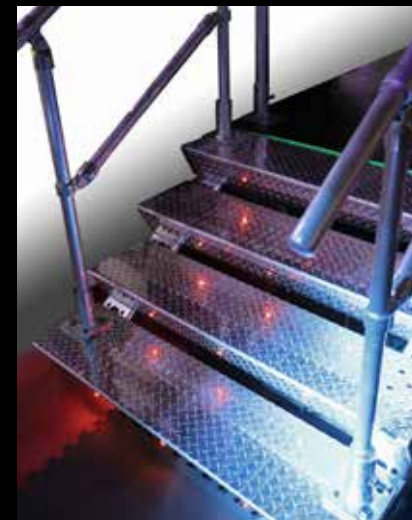
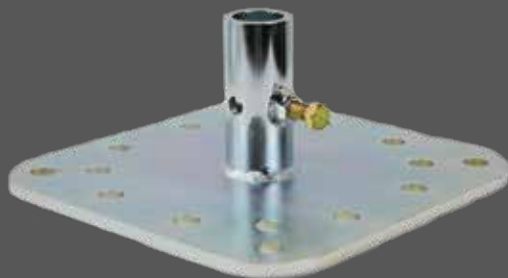
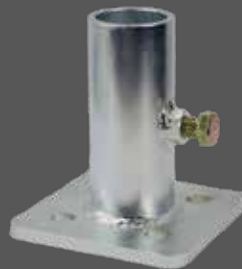


JH | JOIST  
HANGERS

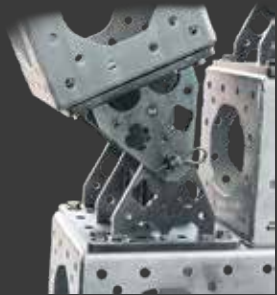
# PIPE ADAPTERS

## KEY FEATURES

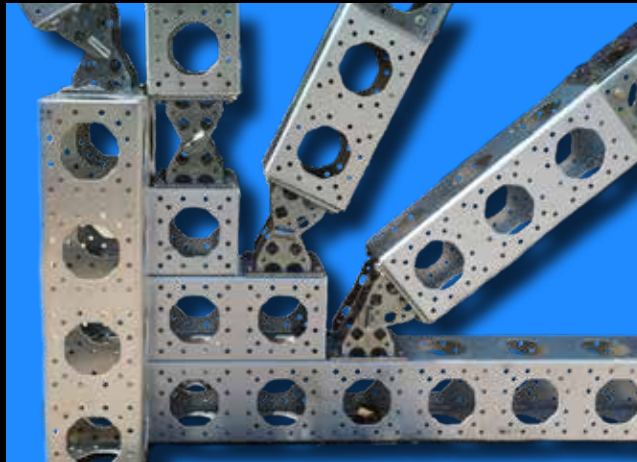
- Interfaces with traditional scaffolding
- Creates handrail structures for safety
- Lamp bars for use in lighting



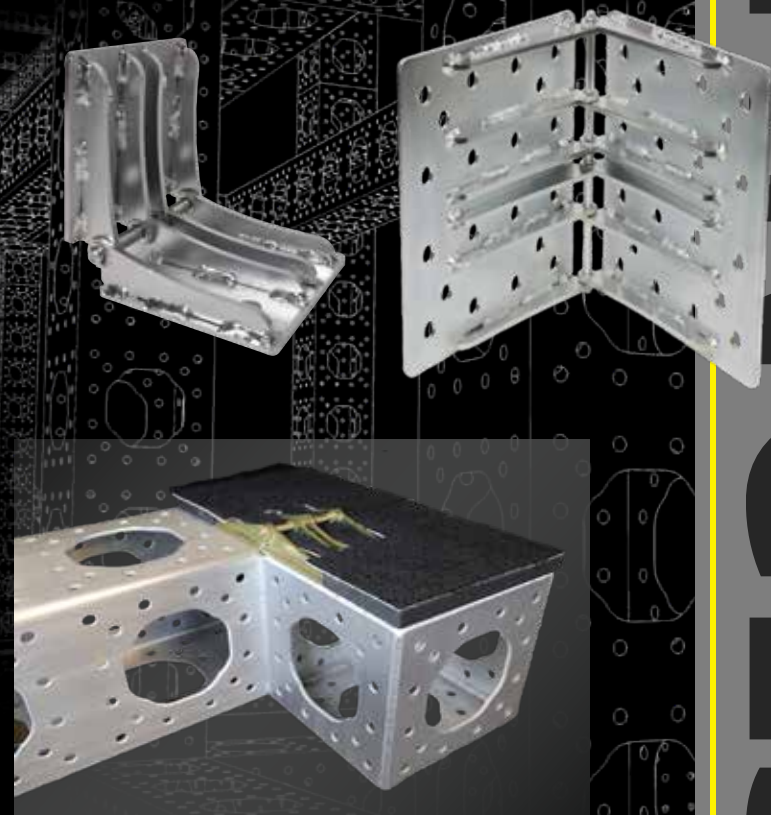
## HINGES



ModTruss 6" & 12"  
**180° Hinge  
Assembly**



ModTruss 6" & 12" | **Flat Hinge**



# HINGES

## UNIVERSAL MOUNT

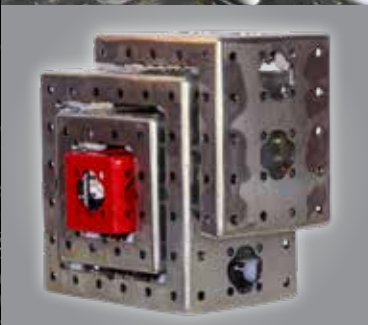
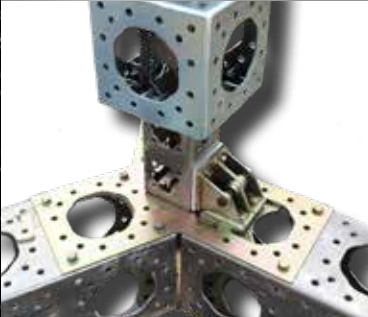


**KEY FEATURE** | Flexible rigging and mounting



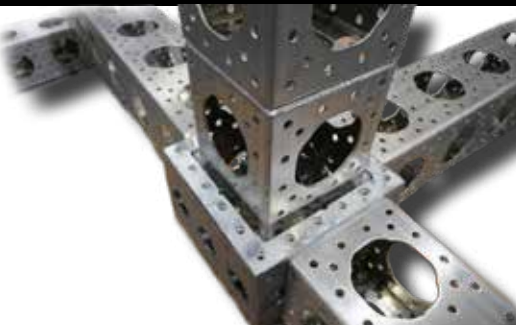
MR | MOTION  
& RIGGING

## SLEEVE BLOCKS



### KEY FEATURES

- Available sizes: 6", 12" & 18"
- Allows for linear travel
- Fixed sleeve or fixed truss movement
- Sleeves can be doubled or stacked

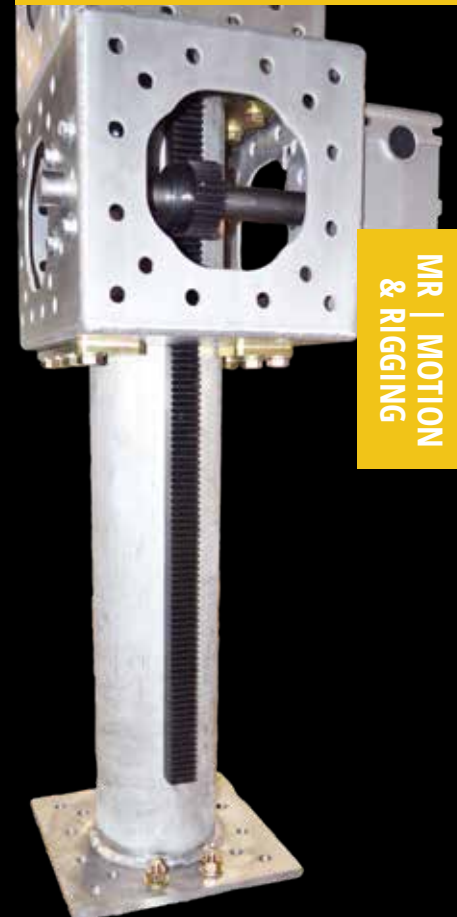


## TELESCOPIC TUBE



### KEY FEATURE

- Operated by:
- Hydraulics
  - Ball-screw
  - Gear



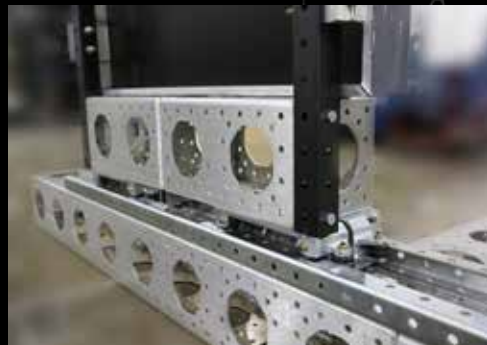
MR | MOTION  
& RIGGING

## JACKS & WHEELS



With the addition of these simple products your structure can become mobile.

## TROLLEY



### KEY FEATURES

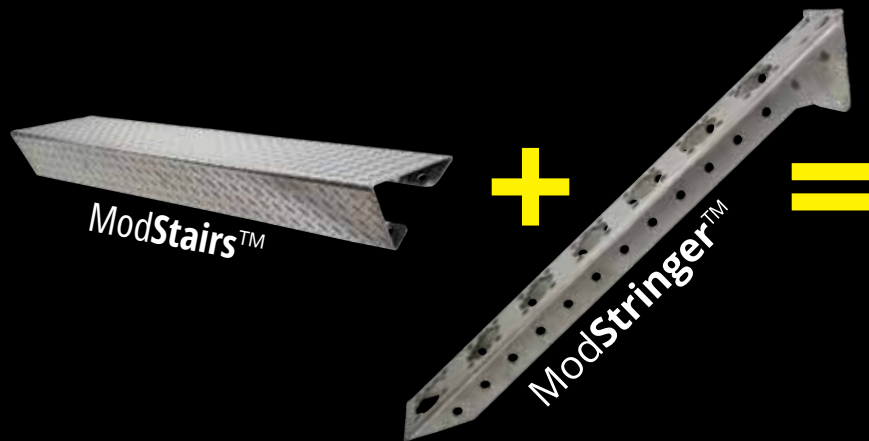
- Split design
- High capacity
- Omni directional loading



# ModStairs™ & ModStringer™

## KEY FEATURES

- Fully Modular System
- ModStair tread accepts a 6" pipe adapter for adding additional handrails

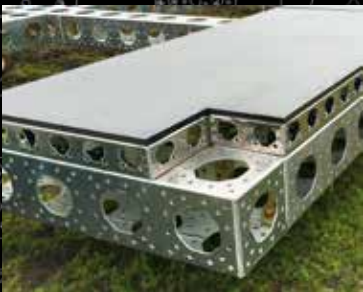
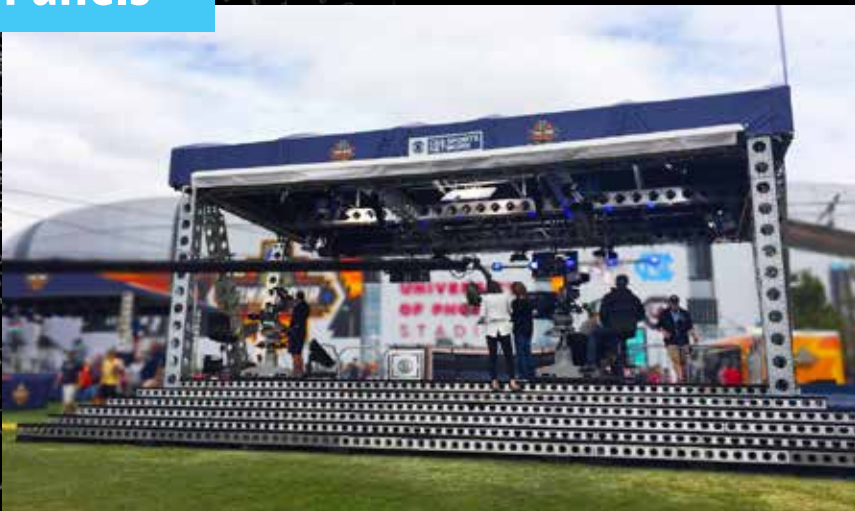


Unlimited  
Configurations



AC | ACCESS

## ModPanels™



### KEY USES

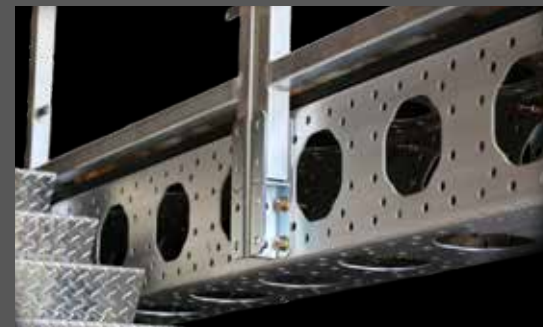
- Floors
- Ceilings
- Walls

Fully assembled, the ModPanel offers a 150lbs per square foot load rating.

## ModHandrails™

### KEY FEATURES

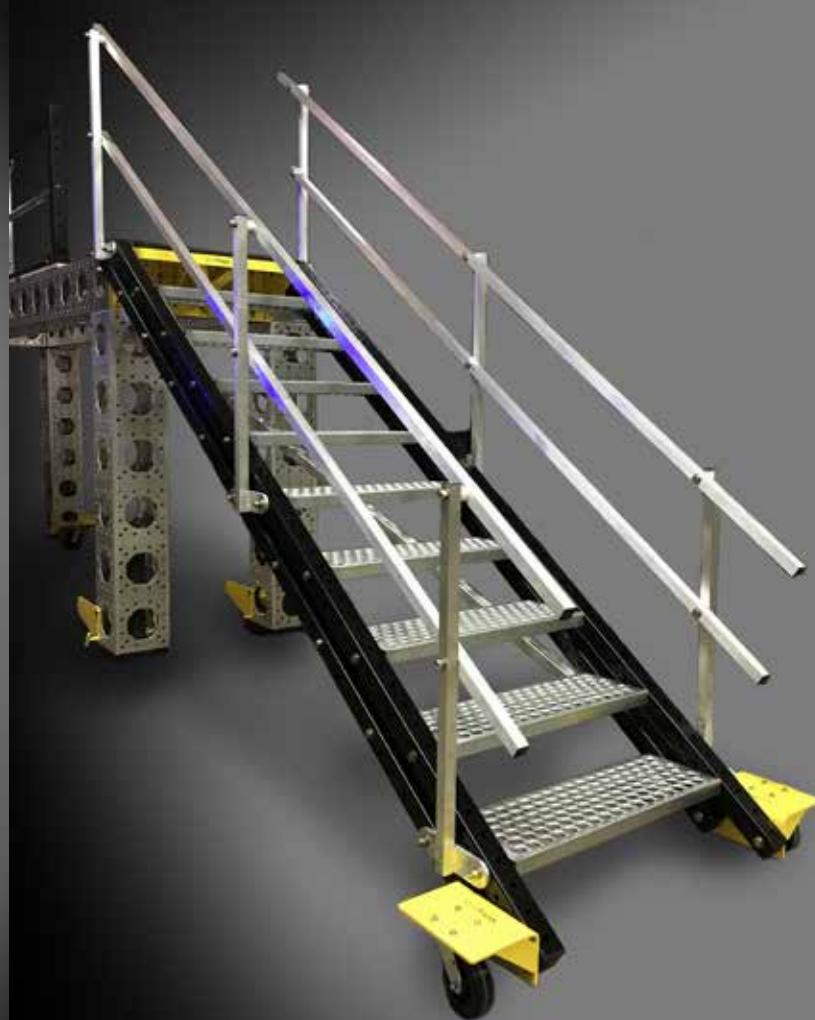
- Aesthetically pleasing
- Top or side mount
- Exceeds permanent building code
- Brandable insert



## ADJUSTABLE STAIRS

### KEY FEATURES

- Free standing or platform supported
- Adjustable angle
- Rolling or fixed
- Configurable in both length & width
- Anti-slip treads
- Stairs remain level at any height



# ADJUSTABLE STAIRS

AC | ACCESS

## MINI TOWER

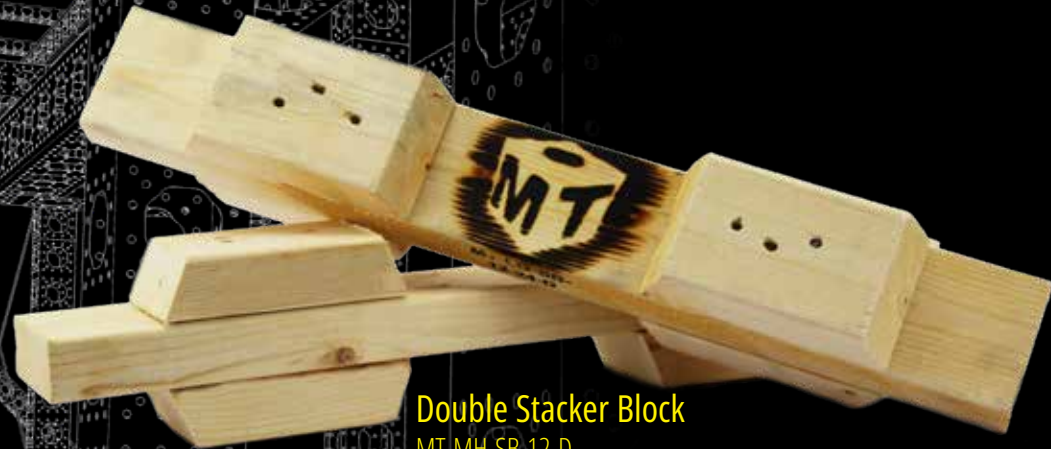


# MINI TOWER

### KEY FEATURES

- Configurable base
- Compact rolling design
- Height adjustable legs
- Optional wheel kit

# STACKER BLOCKS



Double Stacker Block  
MT-MH-SB-12-D

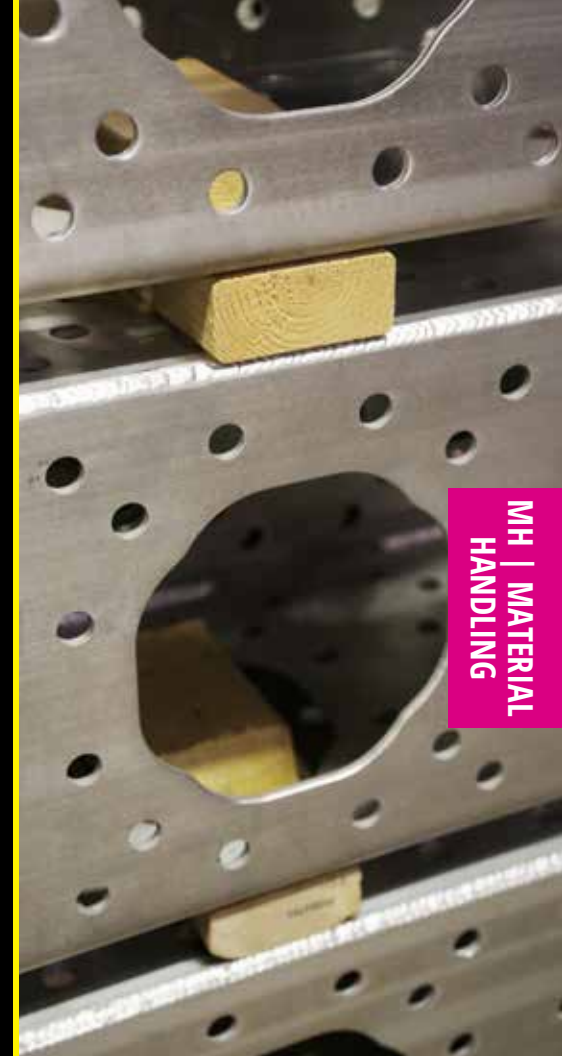


Single Stacker Block  
MT-MH-SB-12-S



## KEY FEATURES

- Safe & stable way to stack 12" truss series
- Creates a friction barrier & interlocks truss
- Lengthens the life & cosmetic longevity of truss
- Solves many shipping stability issues



## FREQUENTLY ASKED QUESTIONS

***Q: Is it reconfigurable?***

A: The basis of Mod**Truss** is that the product can be reused and reassembled over and over.

***Q: What is its value?***

A: Traditional one airframe welded structures were only as good as the job that they were assembled for. When you change fleet types with Mod**Truss**, you do not need to throw away your platforms and docks. You simply reconfigure sections of your Mod**Truss** structure to match your new aircraft.

***Q: Accessories?***

A: There is a whole range of accessories that compliment Mod**Truss** such as; hinges, plates, stairs, handrails and decking.

***Q: Bumpers?***

A: We currently offer 7" half-round, high-impact foam bumpers from an established industry manufacturer.

***Q: Do you have software that I can design with?***

A: You can download a free copy of SketchUp Make ([www.sketchup.com](http://www.sketchup.com)) to design your next Mod**Truss** structure, as well as Solidworks and other CAD formats.

***Q: Can I rent ModTruss?***

A: Yes, we have a broad network of distributors across the United States and Europe that can help you with your Mod**Truss** needs.

***Q: Who assembles it?***

A: Mod**Truss** can assist with assembly and installation.

Q&A



Mod**Truss**<sup>™</sup>  
INC

# ***AEROSPACE***

DESIGN | BUILD | REUSE

**CONTACT YOUR LOCAL DEALER**

**ModCon AB**

**[www.mod-con.se](http://www.mod-con.se)**

**+46 705 209909**

33 Sheboygan St. | Fond du Lac, WI • 54935 • USA | 1.844.663.8787 | [www.ModTruss.com](http://www.ModTruss.com)

Copyright© January 25th, 2018. All Rights Reserved.